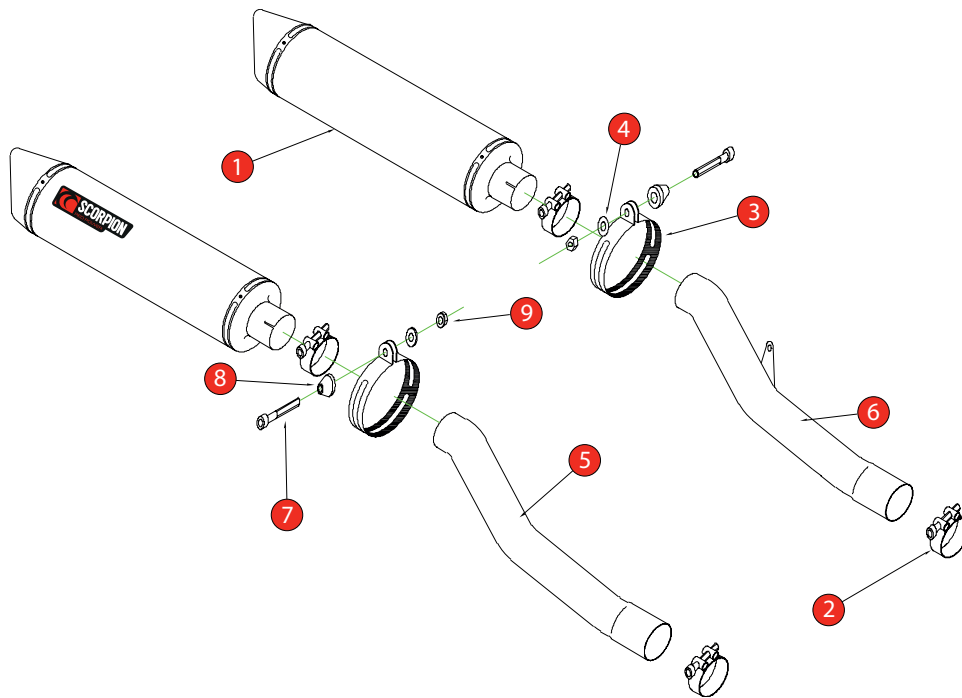


Box: PLOCK 2x2

BIKE	HONDA CBR 1100 XX SUPER BLACKBIRD	PART NO.	EHA - 54
YEAR	1996 - 2006	FIT KITS	OVAL Z039.11053 // ROUND Z039.10053
NOTES	Use standard fittings where not supplied Remove standard gasket if fitted.	DB-Killer	SCEXDBK12 - (Type B)



1	2 x 450mm Silencers ESC 50	8	2 x Alloy Bolt Finishers
2	4 x 51 - 55mm Band Clamps (Z016.10002)	9	2 x M8 Nyloc Nuts (Z017.10062)
3	2 x Comp Silencer Straps (R-Z038.10090) (O-Z038.10088)	10	Bump Stop Kit
4	2 x M8 25mm Washers (Z017.10825)		
5	Connecting Pipe CP005A		
6	Connecting Pipe CP006A		
7	2 x M8 x 45mm Cap Head Bolts (Z017.10077)		

E-MARK ROUND	SCDB-RS e4 2035
E-MARK OVAL	SCDB-OS e4 2072
ISSUE NO.	12
DATE	16/10/2018
AUTHORISED	J.Harkin
CHECKED	

NOTE: ENSURE SCORPION SYSTEM IS CLEAR OF MOVING PARTS AND ALL ORIGINAL FUNCTIONS WORK CORRECTLY.

A) Remove original exhaust from bike, taking care to keep all original components in a safe place.

B) Refit Scorpion exhaust as per line diagram above.

C) When fitted take bike for a short ride to ensure all functions are correct.

D) When bike & exhaust are cool enough check all nuts and bolts are still secure.