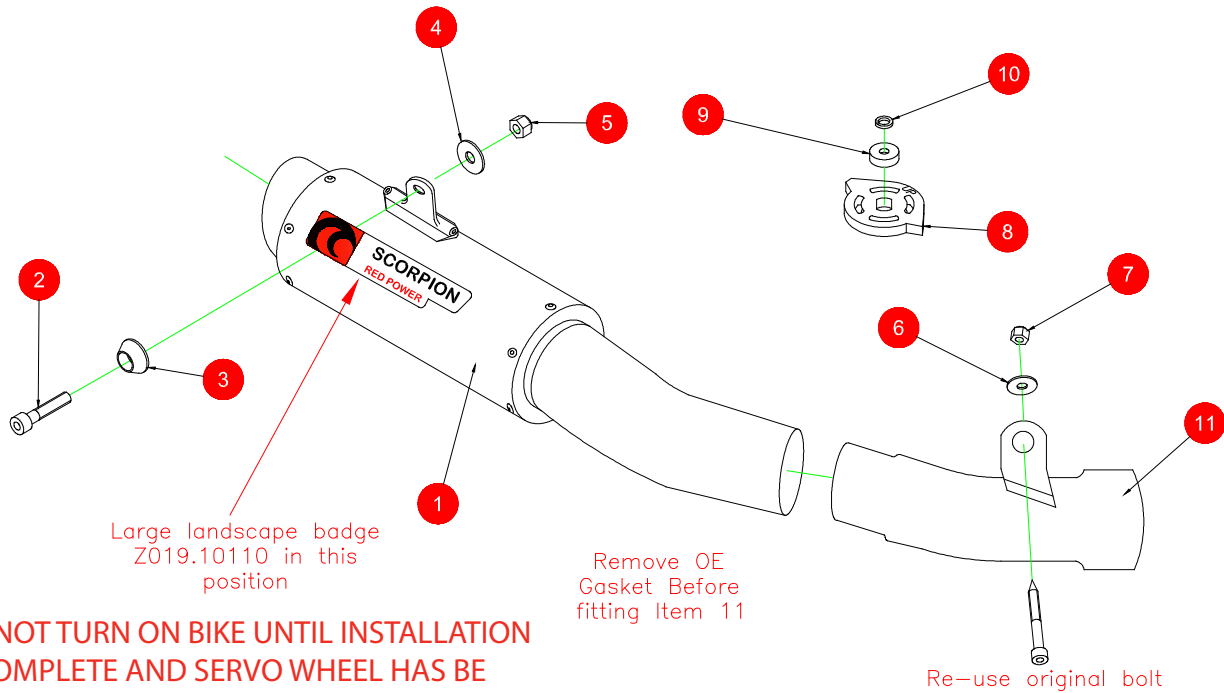


BIKE	KAWASAKI Z800	PART NO.	KA-1004
YEAR	2013 - 2016	FIT KITS	Z039.20480
NOTES	Where not supplied use original fittings.	DB-Killer	SCEXDBK28 - (Type EE)



**DO NOT TURN ON BIKE UNTIL INSTALLATION IS COMPLETE AND SERVO WHEEL HAS BE FULLY INSTALLED.**

- |                                                      |                                               |
|------------------------------------------------------|-----------------------------------------------|
| 1 SC-257 RACE RP-1 GP Silencer with integrated CP717 | 7 M10x1.25 FINE THREAD Nyloc Nut (Z017.11018) |
| 2 M8x60mm Cap Head Bolt (Z017.10080)                 | 8 Replacement Servo Wheel (Z007.10955)        |
| 3 Alloy Bolt Finisher (Z026.20068)                   | 9 Aluminium Coller (Z026.20045)               |
| 4 M8x25mm Washer (Z017.10825)                        | 10 M6 Split Washer (Z017.10027)               |
| 5 M8 Nyloc Nut (Z017.10062)                          | 11 Connecting Pipe CP711                      |
| 6 M10x25mm Washer (Z017.11014)                       |                                               |

E-MARK	BSAU 193a 1990/t3
ISSUE NO.	06
DATE	18/10/2018
AUTHORISED	J.Harkin
CHECKED	

**NOTE:** ENSURE SCORPION SYSTEM IS CLEAR OF MOVING PARTS AND ALL ORIGINAL FUNCTIONS WORK CORRECTLY.



Box: PLOCK 1

BIKE	KAWASAKI Z800	PART NO.	KA-1004
YEAR	2013 - 2016	FIT KITS	Z039.20480
NOTES	Where not supplied use original fittings.	FEATURES	

CONTINUED FROM OVERLEAF:



A) Remove pillion seat.



B) Remove bracket holding riders seat.

C) Remove riders seat.

D) Remove screw from right hand plastic trim.

E) Remove top bolt from right hand plastic trim.

F) Slide plastic trim off velcro.



G) Remove servo wheel. DO NOT TURN SHAFT, remove wheel from shaft and spring retainer.

H) Remove heat shield off original exhaust.





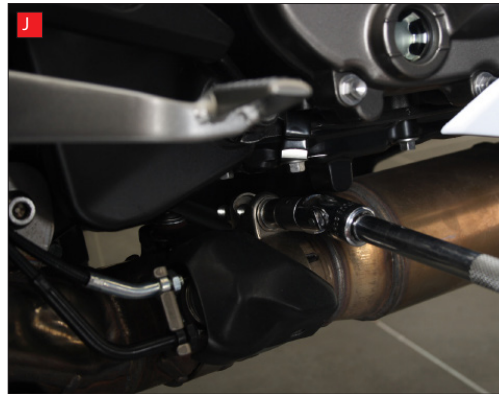
Box: PLOCK 1

BIKE	KAWASAKI Z800	PART NO.	KA-1004
YEAR	2013 - 2016	FIT KITS	Z039.20480
NOTES	Where not supplied use original fittings.	FEATURES	

CONTINUED FROM OVERLEAF:



I



J

I) Remove bolt from bracket.

J) Remove bolt from the clamp.

K) Remove exhaust mounting bolt and nut from pillion foot peg.

L) Carefully remove standard silencer, slowly remove feeding out the cables, PLEASE TAKE CARE.

M) Fit Scorpion servo wheel with collar, washer and original bolt, ensure "UP" is facing you, tighten to 5 ft/lb, DO NOT TURN SHAFT.



K

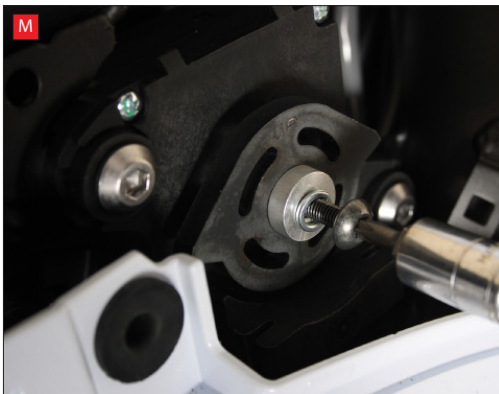


L

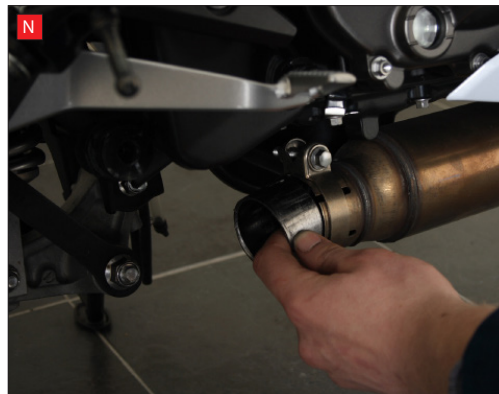
N) Remove original gasket from the standard pipe.

O) Fit Scorpion silencer, using standard bolt and use the washer and nut provided on the mounting bracket. Then tighten up the clamp.

P) Bolt Scorpion silencer to pillion foot peg using items 2, 3, 4 and 5.

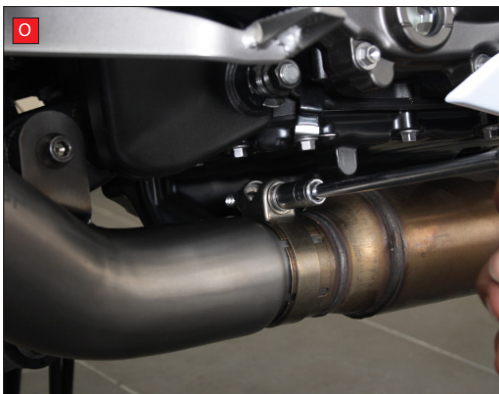


M



N

Ensure all clamps and bolts are secure, re-fit plastic trim and both seat. Run the bike for 10 minutes, re-check all bolts and clamps are secure.



O



P