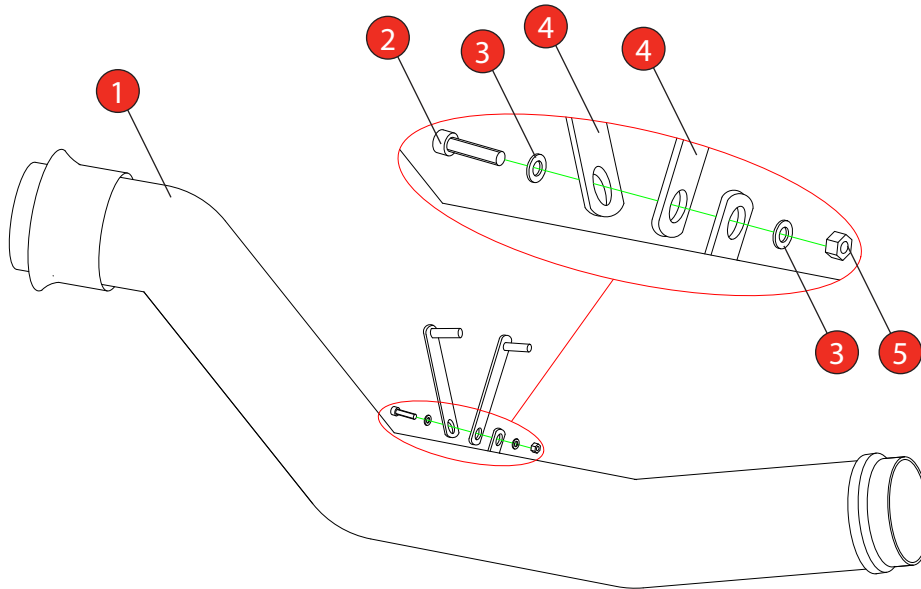


Bike	KTM 1290 Super Duke R	Part No.	KT-90-MA
Year	2017-2018	Fit Kit	Z039.1065
Notes	Use original fittings. Fitting this pipe will cause the engine managment light to appear. We recomend fitting this product with a exhaust servo eliminator.	dB Killer	N/A

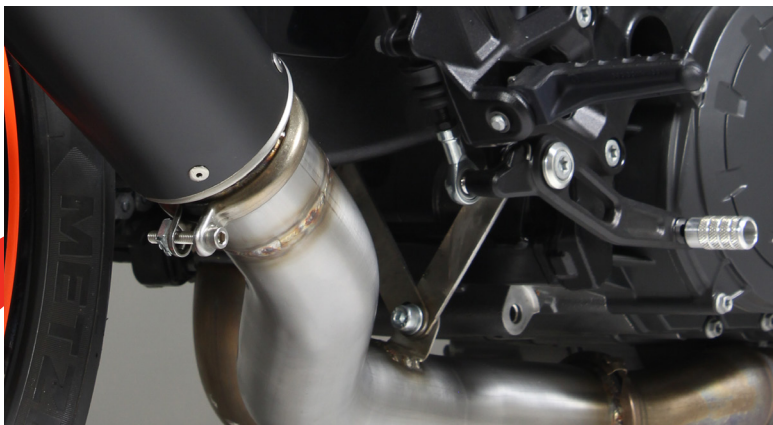
Estimated Fitting Time: 60 Minutes



NO.	PART NO.	DESCRIPTION	QTY
1	CP1014	Connecting Pipe	1
Fit Kit - Z039.10645			
2	Z017.10072	M8 x 20mm Cap Head Bolt	1
3	Z017.10831	M8 x 17mm Washer	2
4	Z015.31363	Mounting Bracket	2
5	Z017.10063	M8 Nut	1

E-MARK	N/A
DATE	19/02/19
ISSUE	01
AUTHORISED	J.Harkin

NOTE: ENSURE SCORPION SYSTEM IS CLEAR OF MOVING PARTS AND ALL ORIGINAL FUNCTIONS WORK CORRECTLY.



Fit the mounting brackets into the original rubber mounting point. once happy with the alignment of the de-cat pipe secure the mouting bracket in place.



STAY CONNECTED TO RED POWER.

Bike	KTM 1290 Super Duke R	Part No.	KT-90-MA
Year	2017-2018	Fit Kit	Z039.10645
Notes	Where not supplied use original fittings.	dB Killer	N/A

Estimated Fitting Time: 60 Minutes

A) Remove original exhaust from bike, taking care to keep all original components in a safe place.

B) Refit Scorpion exhaust as per line diagram above.

C) When fitted take bike for a short ride to ensure all functions are correct.

D) When bike & exhaust are cool enough check all nuts and bolts are still secure.

Thank you for purchasing your Scorpion Silencer.

Care of your exhaust: Please refrain from cleaning silencer with heavy solvents or abrasives!

Vielen Dank Für den kauf eines Scorpion Schalldampfers! Pflegehinweis: Bitte verwenden Sie niemals Scheuermittel oder aggressive Reiniger zur Pflege Ihres Auspuffes!

Merci d'avoir choisi un echappement Scorpion.

Entretien de votre silencieux: Ne pas utiliser de solvants ou de produits abrasifs!

“Muchas gracias por adquirir un Silencioso Scorpion. Le recomendamos no limpiar el silencioso con productos abrasivos o aquellos que contengan disolventes.”



STAY CONNECTED TO RED POWER.