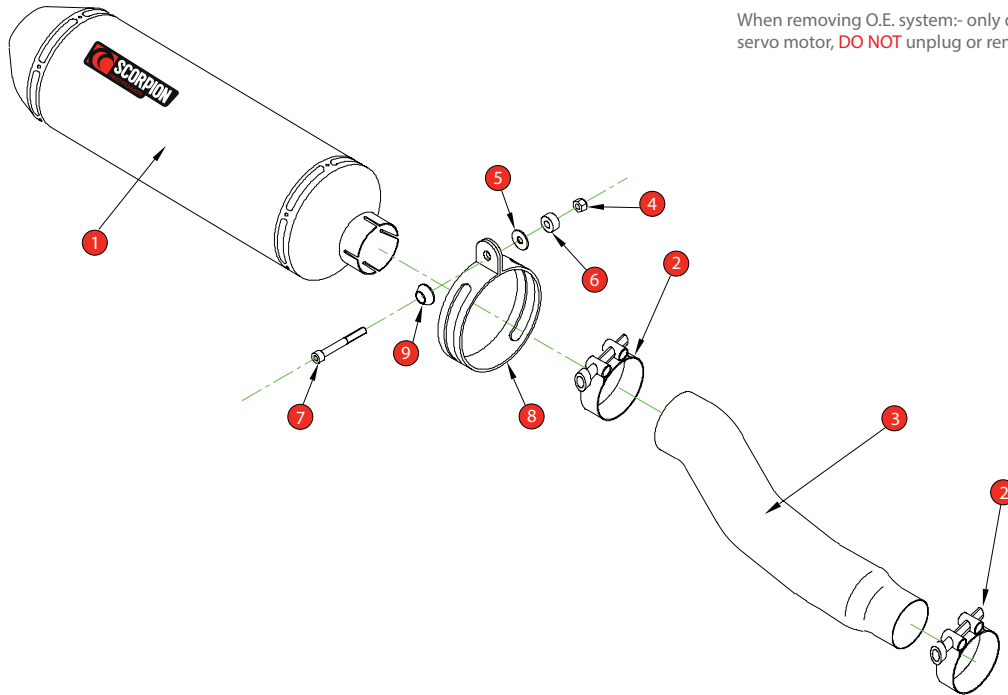


Box: PLOCK 1

BIKE	HONDA CBF 1000	PART NO.	EHA-106
YEAR	2010-16	FIT KITS	OVAL Z039.11383
NOTES	Use standard fittings where not supplied <b>Remove standard gasket if fitted.</b>	DB-Killer	SCEXDBK11 - (Type A)



When removing O.E. system:- only disconnect cables from servo motor, **DO NOT** unplug or remove servo.

- |  |  |
|--|--|
| 1 350mm Silencer ESC 174               | 8 Composite Oval Strap                 |
| 2 2 x 51-55mm Band Clamps (Z016.10002) | 9 Aluminium Bolt Finisher (Z026.20068) |
| 3 Connecting Pipe CP 599               |  |
| 4 M8 Nyloc Nut (Z017.10062)            |  |
| 5 M8 x 25mm Washer (Z017.10825)        |  |
| 6 10mm Spacer (Z026.10004)             |  |
| 7 M8 x 70mm Cap Head Bolt (Z017.10082) |  |

E-MARK ROUND	
E-MARK OVAL	BSAU [19]a 190t3
ISSUE NO.	04
DATE	13/12/2018
AUTHORISED	J.Harkin
CHECKED	

**NOTE:** ENSURE SCORPION SYSTEM IS CLEAR OF MOVING PARTS AND ALL ORIGINAL FUNCTIONS WORK CORRECTLY.



A) Remove original exhaust from bike, taking care to keep all original components in a safe place.

B) Refit Scorpion exhaust as per line diagram above.

C) When fitted take bike for a short ride to ensure all functions are correct.

D) When bike & exhaust are cool enough check all nuts and bolts are still secure.