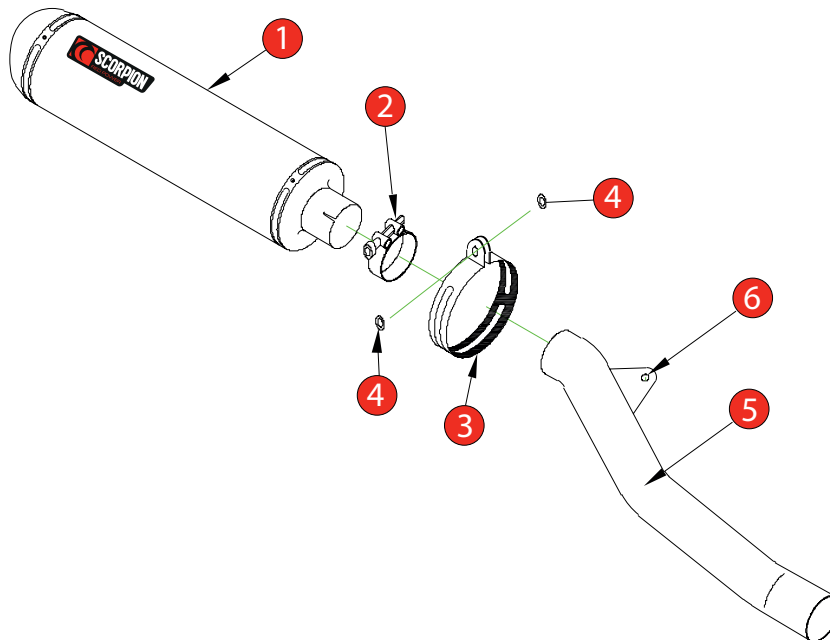


Box: PLOCK 2

BIKE	SUZUKI GSF 1200 BANDIT	PART NO.	ESI - 80
YEAR	2001 - 2006	FIT KITS	OVAL Z039.11101 // ROUND Z039.10101
NOTES	Use standard fittings where not supplied Remove standard gasket if fitted.	DB-Killer	SCEXDBK12 - (Type B)



- | | |
|---|--|
| 1 | 450mm Silencer ESC 50 |
| 2 | 51-55mm Band Clamp (Z016.10002) |
| 3 | Composite Silencer Strap (ZR-Z038.10090)(O-Z038.10088) |
| 4 | 2 x M8 x 25mm Washer (Z026.20068) |
| 5 | Connecting Pipe CP33 |
| 6 | Bump Stop Kit |

E-MARK ROUND	BSAU 193a 1990/t3
E-MARK OVAL	BSAU 193a 1990/t3
ISSUE NO.	08
DATE	04/08/21
AUTHORISED	M.Ydlibi
CHECKED	

NOTE: ENSURE SCORPION SYSTEM IS CLEAR OF MOVING PARTS AND ALL ORIGINAL FUNCTIONS WORK CORRECTLY.

A) Remove original exhaust from bike, taking care to keep all original components in a safe place.

B) Refit Scorpion exhaust as per line diagram above.

C) When fitted take bike for a short ride to ensure all functions are correct.

D) When bike & exhaust are cool enough check all nuts and bolts are still secure.