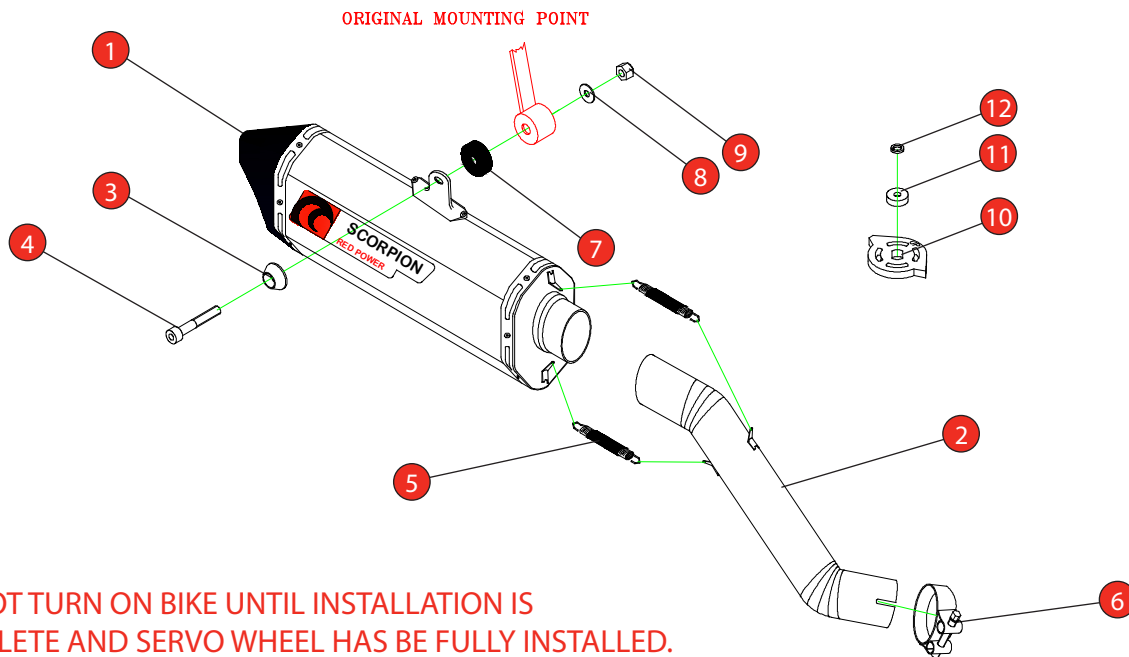


Box: PLOCK 2 Estimated Fitting Time: 1 Hour 30

BIKE	Kawasaki ZX-10R / ZX-10RR Superstock	PART NO.	SSTCK-1002
YEAR	ZX-10 R :- 2016 - Current ZX-10 RR :- 2017 - Current	FIT KITS	Z039.10585
NOTES	Where not supplied use original fittings. This system will remove the O.E catalyst.	DB-Killer	SCEXDBK38 - (Type XX)



DO NOT TURN ON BIKE UNTIL INSTALLATION IS COMPLETE AND SERVO WHEEL HAS BE FULLY INSTALLED.

- | | |
|---|---|
| 1 350mm Silencer RSC369 | 7 M8 x 5mm Spacer Anodised Black (Z026.20281) |
| 2 Connecting Pipe CP912 | 8 M8 x 17mm Washer (Z017.10831) |
| 3 Alloy Bolt Finisher (Z026.20068) | 9 M8 Nyloc Nut (Z017.10062) |
| 4 M8 x 45mm Cap head bolt (Z017.10077) | 10 Servo Disc (Z007.10955) |
| 5 2 x Rubber Coated Spring (Z028.10030) | 11 Servo Collar (Z026.20045) |
| 6 55-59mm Clamp (Z016.10004) | 12 M6 Spring Washer (Z017.10027) |

E-MARK	BSAU 193a 1990/t3
ISSUE NO.	04
DATE	17/10/2018
AUTHORISED	J.Harkin
CHECKED	

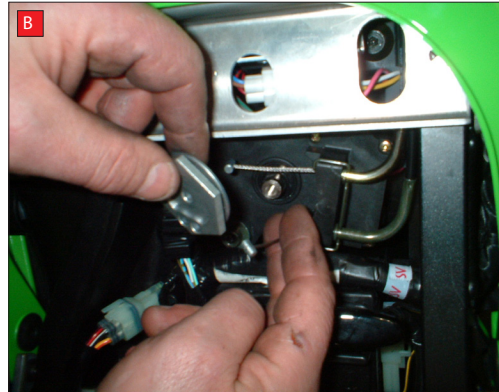
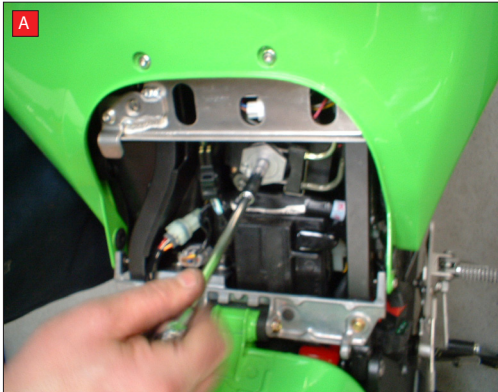
NOTE: ENSURE SCORPION SYSTEM IS CLEAR OF MOVING PARTS AND ALL ORIGINAL FUNCTIONS WORK CORRECTLY.



Box: PLOCK 2

BIKE	Kawasaki ZX-10R / ZX-10RR Superstock	PART NO.	SSTCK-1002
YEAR		FIT KITS	Z039.10585
NOTES	Where not supplied use original fittings. This system will remove the O.E catalyst.	FEATURES	

CONTINUED FROM OVERLEAF:

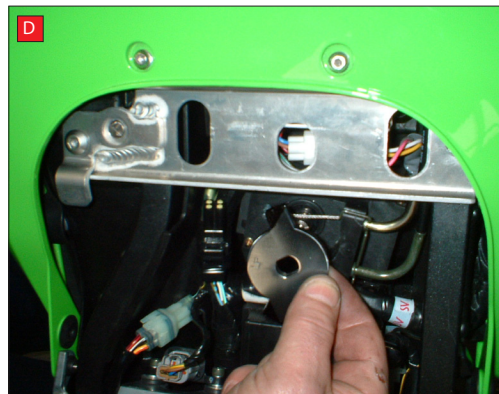


A) To disconnect cables at the seat end, you have to remove the hexagonal wheel, without turning it's shaft.

Remove bolt in centre of hexagonal wheel. Support wheel if tight.

B) Remove hexagonal wheel from shaft, retaining O.E bolt. DO NOT TURN SHAFT.

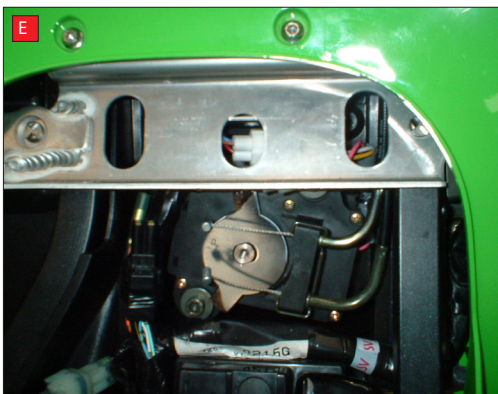
Remove spring clip retaining cables and completely remove the cables.



C) The replacement wheel comes with an aluminium coler that is secured in place with O.E bolt and split washer. TIGHTEN TO 5ft/lb USING A TORQUE WRENCH.

D) The replacment wheel MUST be fitted with the etched letters "UP"

E) The replacment whell will only fit one way with the letters "UP". In case of difficulty please contact us.



WITH SERVO WHEEL FITTED, THE LOOSE CABLES WILL BE REMOVED WITH THE REST OF THE SYSTEM.