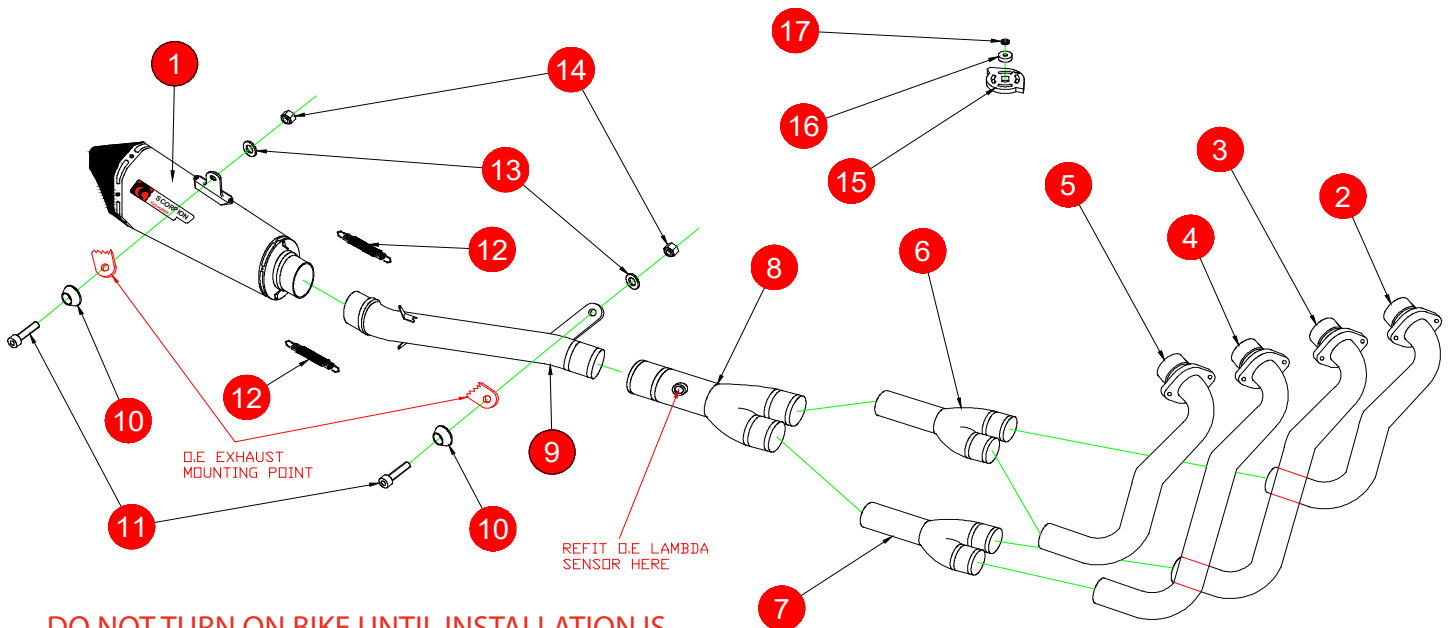


Box: Case 11

BIKE	SUZUKI GSX-R 600 / GSX-R 750	PART NO.	RSI-109-SYS
YEAR	2011-19	FIT KITS	Z039.10532
NOTES	Use standard fittings where not supplied Remove standard gasket if fitted.	DB-Killer	SCEXDB23 - (Type V)



DO NOT TURN ON BIKE UNTIL INSTALLATION IS COMPLETE AND SERVO WHEEL HAS BE FULLY INSTALLED.

1 Serket Silencer RSC231	10 2 x Alloy Bolt Finisher (Z026.20068)
2 CP830	11 2 x M8x45mm Cap Head Bolt (Z017.10077)
3 CP831	12 2 x Rubber Coated Spring (Z028.10030)
4 CP832	13 2 x M8x25 Washer (Z017.10825)
5 CP833	14 2 x M8 Nyloc Nut (Z017.10062)
6 CP834	15 Servo Wheel (Z007.10955)
7 CP835	16 Mounting Cup (Z026.20045)
8 CP836	17 M6 Spring Washer (Z017.10027)
9 CP837	

E-MARK	BSAU 193a 1990/t3
ISSUE NO.	03
DATE	27/01/2020
AUTHORISED	J.Harkin
CHECKED	

NOTE: ENSURE SCORPION SYSTEM IS CLEAR OF MOVING PARTS AND ALL ORIGINAL FUNCTIONS WORK CORRECTLY.



A) Remove original fairings on the bike to gain access to the O.E, then remove the O.E exhaust from bike, taking care to keep all original components in a safe place.

B) Refit Scorpion exhaust as per line diagram above.

C) Fit servo wheel kit to bike as show on next page.

D) When fitted bolt on all O.E fairings and take bike for a short ride to ensure all functions are correct.

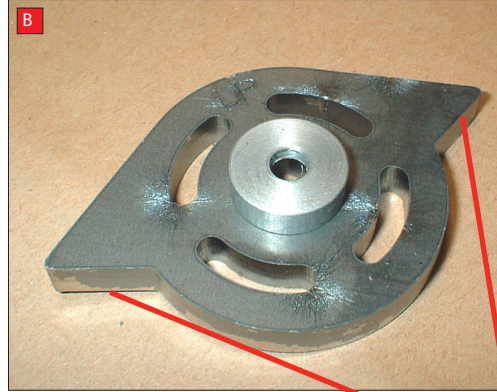
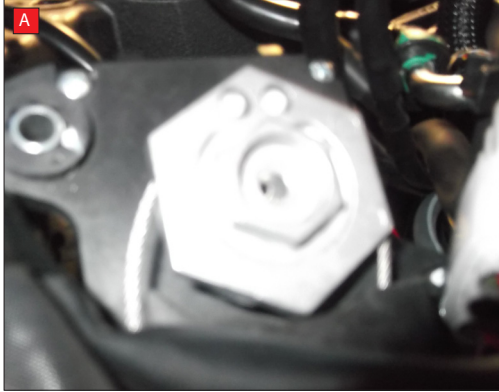
D) When bike & exhaust are cool enough check all nuts and bolts are still secure.



Box: Case 11

BIKE	SUZUKI GSX-R 600 / GSX-R 750	PART NO.	RSI-109-SYS
YEAR	2011-19	FIT KITS	Z039.10532
NOTES	Use standard fittings where not supplied Remove standard gasket if fitted.	FEATURES	

CONTINUED FROM OVERLEAF:



A) Remove the O.E parts to gain access to the servo wheel motor. it is located under the fuel tank. this is what it will look like.

B) Un-bolt the standard wheel **DO NOT TURN THE SHAFT WHILE DOING THIS.** Remove spring clip retaining cable and completely remove the cables. Now bolt on the Scorpion servo wheel using the O.E bolt, please use items 15, 16 and 17 as shown. Make sure the word 'UP' is facing you and that the two faces here are facing towards the cable/cable clip end of the motor. The replacement wheel comes with a aluminium collar that is secured in place with OE bolt. **DO NOT OVER TIGHTEN.**

C) The replacement wheel will only fit **ONE WAY** with letters "UP". In case of difficulty please contact us.

With servo wheel fitted, the loose cables will be removed with rest of exhaust system.

Box: Case 11

BIKE	SUZUKI GSX-R 600 / GSX-R 750	PART NO.	RSI-109
YEAR	2011-19	FIT KITS	Z039.10532
NOTES	Use standard fittings where not supplied Remove standard gasket if fitted.	FEATURES	

Thank you for purchasing your Scorpion Silencer.

Care of your exhaust: Please refrain from cleaning silencer with heavy solvents or abrasives!

Vielen Dank Für den kauf eines Scorpion Schalldampfers! Pflegehinweis: Bitte verwenden Sie niemals Scheuermittel oder aggressive Reiniger zur Pflege Ihres Auspuffes!

Merci d'avoir choisi un echappement Scorpion.

Entretien de votre silencieux: Ne pas utiliser de solvants ou de produits abrasifs!

"Muchas gracias por adquirir un Silencioso Scorpion. Le recomendamos no limpiar el silencioso con productos abrasivos o aquellos que contengan disolventes."