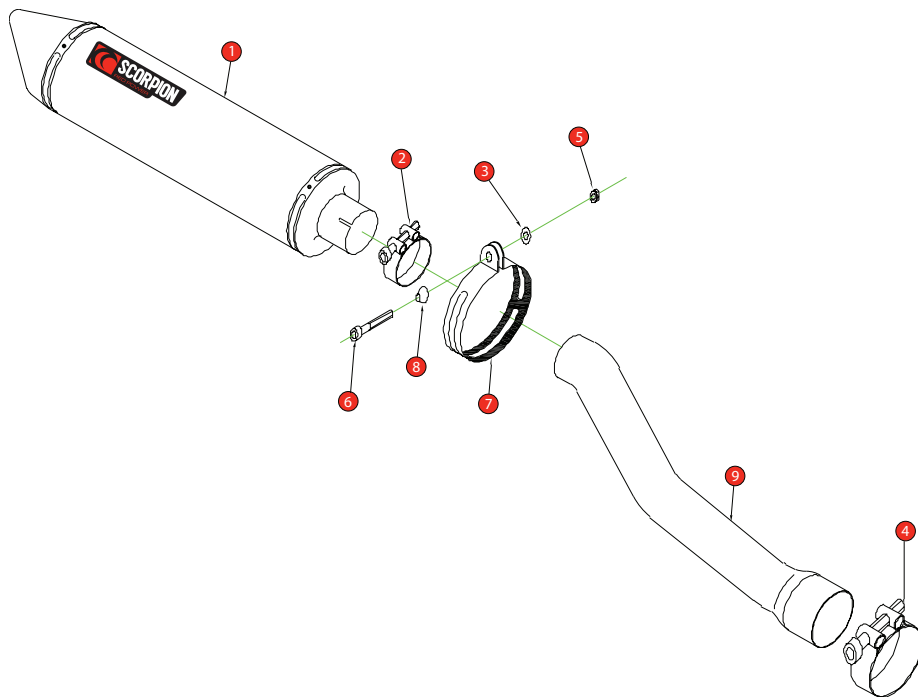


Box: PLOCK 2

BIKE	Yamaha YZF-R1	PART NO.	EYA-65
YEAR	2002-03	FIT KITS	OVAL Z039.11128 / ROUND Z039.10128
NOTES	Use standard fittings where not supplied Remove standard gasket if fitted.	DB-Killer	SCEXDBK12 - (Type B)



1 450mm Silencer ESC 50	8 Aluminium Bolt Finisher (Z026.20068)
2 51-55mm Band Clamp (Z016.10002)	9 Connecting Pipe CP 86
3 2 x M8 x 17mm Washers (Z017.10831)	
4 59-63mm Band Clamp (Z016.10001)	
5 M8 Nylock Nut (Z017.10062)	
6 M8 x 40mm Cap Head Bolt (Z017.10076)	
7 Composite Strap (R-Z038.10089)(O-Z038.10088)	

E-MARK ROUND	BSAU 193a 1990/t3
E-MARK OVAL	BSAU 193a 1990/t3
ISSUE NO.	12
DATE	05/08/21
AUTHORISED	M.Ydlibi
CHECKED	

NOTE: ENSURE SCORPION SYSTEM IS CLEAR OF MOVING PARTS AND ALL ORIGINAL FUNCTIONS WORK CORRECTLY.

A) Remove original exhaust from bike, taking care to keep all original components in a safe place.

B) Refit Scorpion exhaust as per line diagram above.

C) When fitted take bike for a short ride to ensure all functions are correct.

D) When bike & exhaust are cool enough check all nuts and bolts are still secure.