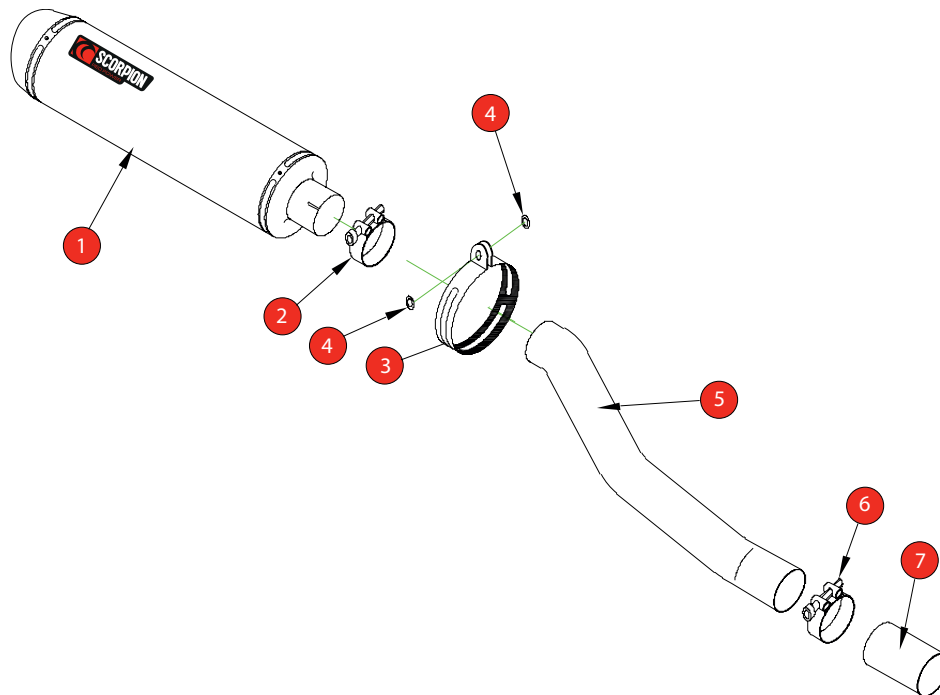


Box: PLOCK 1

|       |   |           |                                     |
|-------|---|-----------|-------------------------------------|
| BIKE  | SUZUKI SV 650                               | PART NO.  | ESI - 65                            |
| YEAR  | 1999 - 2002                                 | FIT KITS  | OVAL Z039.11082 // ROUND Z039.10082 |
| NOTES | Item 7 required to re-fit OE exhaust system | DB-Killer | SCEXDBK12 - (Type B)                |



- |   |                                 |
|---|---------------------------------|
| 1 450mm Silencer ESC 94                                 | 8 Original Silencer Cut Diagram |
| 2 51-55mm Band Clamp (Z016.10002)                       |                                 |
| 3 Composite Silencer Strap (R-Z038.10089)(O-Z038.10088) |                                 |
| 4 2 x M8 x 25mm Washers (Z017.10825)                    |                                 |
| 5 Connecting Pipe CP 325                                |                                 |
| 6 55-59mm Band Clamp (Z016.10004)                       |                                 |
| 7 Re-connecting Sleeve CP327                            |                                 |

|            |                   |
|------------|-------------------|
| E-MARK     | BSAU 193a 1990/t3 |
| ISSUE NO.  | 14                |
| DATE       | 04/08/21          |
| AUTHORISED | M.Ydlibi          |
| CHECKED    |                   |

**NOTE:** ENSURE SCORPION SYSTEM IS CLEAR OF MOVING PARTS AND ALL ORIGINAL FUNCTIONS WORK CORRECTLY.



A) Remove original exhaust from bike, taking care to keep all original components in a safe place.

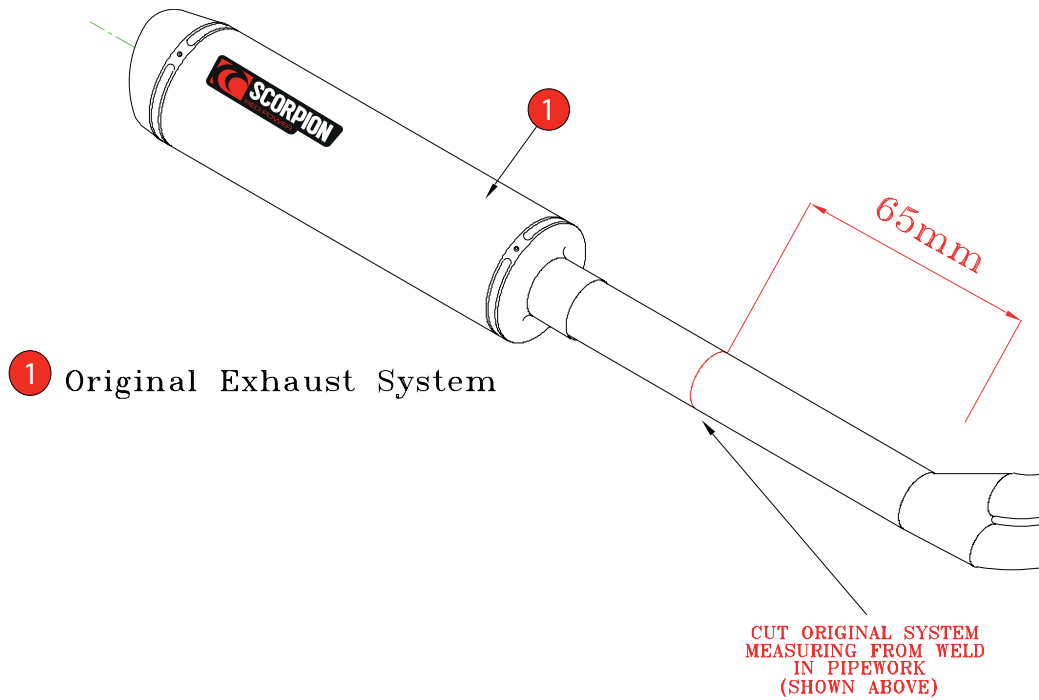
B) Refit Scorpion exhaust as per line diagram above.

C) When fitted take bike for a short ride to ensure all functions are correct.

D) When bike & exhaust are cool enough check all nuts and bolts are still secure.

Box: PLOCK 1

|       |                               |          |                                     |
|-------|-------------------------------|----------|-------------------------------------|
| BIKE  | SUZUKI SV 650                 | PART NO. | ESI - 65                            |
| YEAR  | 1999 - ON                     | FIT KITS | OVAL Z039.11082 // ROUND Z039.10082 |
| NOTES | PIPEWORK CUTTING INSTRUCTIONS | FEATURES |                                     |



- |   |  |
|---|--|
| 1 Use correct tools and check parts list  | 5 Use a small amount of silicone to seal joints  |
| 2 Saw off standard silencer 65mm back from weld in pipework,(as illustrated) Clean sawn edge. | 6 Tighten all fasteners and check that it is clear of all moving parts, & all original functions are working correctly |
| 3 Connector pipe CP-327 should only be used to re-fit std silencer if required.               | 7 Ride for a short distance and re-tighten all fasteners   |
| 4 Use rubber strap under silencer bracket to prevent damage to silencer                       |  |

|            |            |
|------------|------------|
| ISSUE NO.  | 10         |
| DATE       | 11/06/08   |
| AUTHORISED | S.Northrop |
| CHECKED    |            |

**NOTE:** ENSURE SCORPION SYSTEM IS CLEAR OF MOVING PARTS AND ALL ORIGINAL FUNCTIONS WORK CORRECTLY.