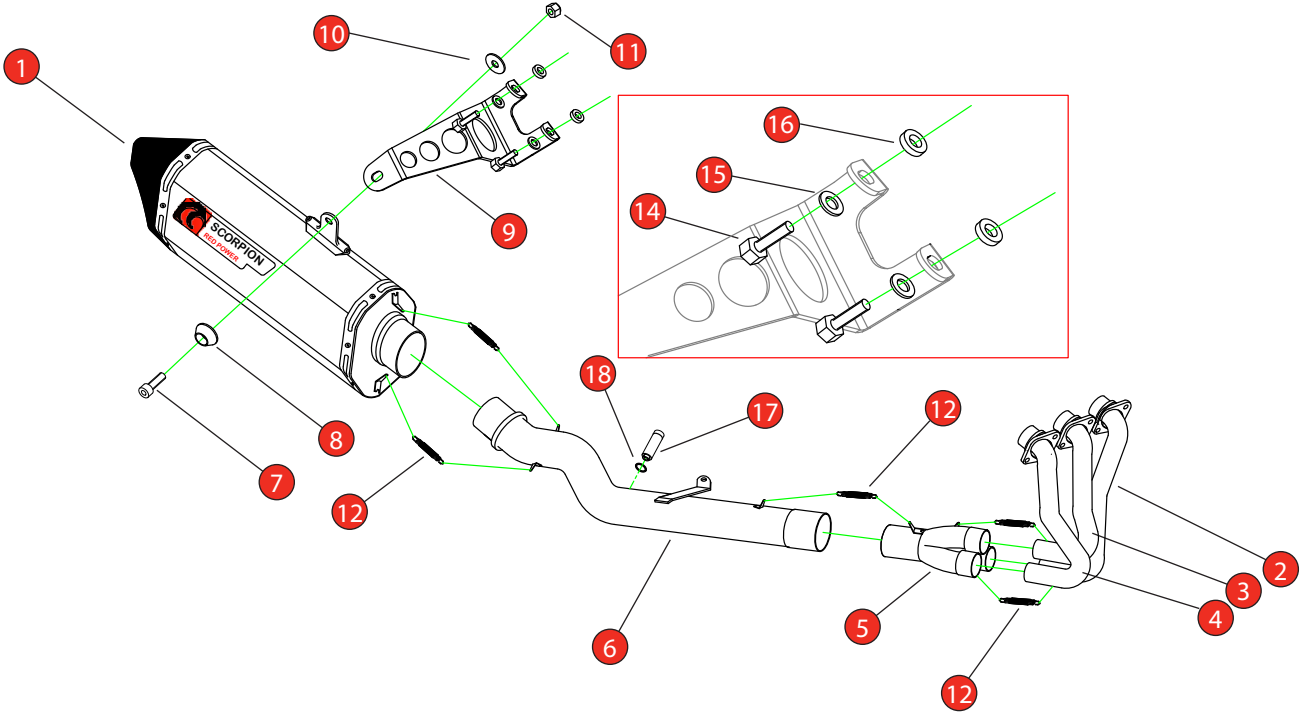


Bike	Yamaha XSR 900 GP	Part No.	RYA-132-SYS
Year	2024 - Current	Fit Kit	Z039.10754
Notes	Where not supplied use original fittings	dB Killer	SCEXDBK24 (TYPE W)

Estimated Fitting Time: 60 Minutes



NO.	PART NO.	DESCRIPTION	QTY
1	RSC499	Serket Taper Silencer	1
2	CP1128	L/H Header Pipe	1
3	CP1129	Centre Header Pipe	1
4	CP1130	R/H Header Pipe	1
5	CP1131	Collector	1
6	CP1132	Connecting Pipe	1
Fit Kit - Z039.10754			
7	Z017.10073	M8 x 25mm Cap Head Bolt	1
8	Z026.20068B	Alloy Bolt Finisher Anodised Black	1
9	Z015.31561	Mounting Bracket	1
10	Z017.10825	M8 x 25mm Washer	1
11	Z017.10062	M8 Nyloc Nut	1
12	Z028.10030	Rubber Coated Spring	5
13	Z024.11134	Lamda Extension Cable (Not shown)	2
14	Z017.10049	M8 x 30mm Hex Bolt	2
15	Z017.10831	M8 x 17mm Washer	2
16	Z026.20049	M8 x 5mm Spacer	2
17	Z026.20185	M12 Lambda Catalyst	1
18	Z017.10728	M12 Copper Washer	1
19	Z017.12732	100 x 1.5mm Black Tie Wrap (Not shown)	1

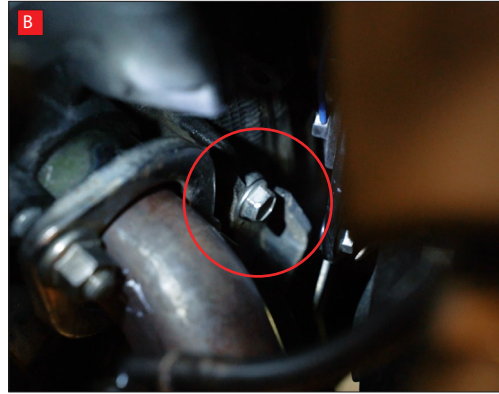
CLASSIFICATION	Closed Circuit Product
HOMOLOGATED	NO
DATE	10/03/2025
ISSUE	00
AUTHORISED	S Shipley

NOTE: ENSURE SCORPION SYSTEM IS CLEAR OF MOVING PARTS AND ALL ORIGINAL FUNCTIONS WORK CORRECTLY.



STAY CONNECTED TO RED POWER.

Bike	Yamaha XSR 900 GP	Part No.	RYA-132-SYS
Year	2024 - Current	Fit Kits	Z039.10754
Notes	Where not supplied use original fittings	dB Killer	SCEXDBK24 (TYPE W)



NOTE: These instructions show the Redpower silencer being installed, the Serket Parallel silencer fits the same way.

A) Remove both Lambda sensors from the original exhaust.

B) Remove the bolt from the radiator support bracket between the header pipes. This will allow you to move the radiator forward slightly to give better access to the header nuts.

C) Once the bolt is removed pull the pin from the mounting rubber.

D) Remove all 6 header nuts.

E) On the left hand side of the bike remove the silencer mounting bolt.

F) On the right hand side of the bike, support the weight of the exhaust then remove the silencer mounting bolt. You can now carefully remove the exhaust from the bike.

G) Remove the metal insert and rubber bush from the left hand side of the bike. This mounting isn't used with the Scorpion system.

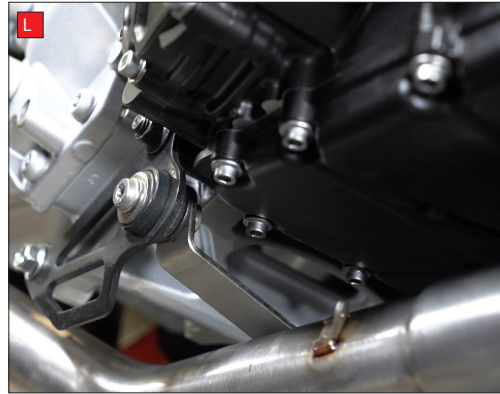
H) On the right hand side of the bike, behind the rear foot peg, remove the 2 circled bolts, this is where the new mounting bracket will attach.

Bike	Yamaha XSR 900 GP	Part No.	RYA-132-SYS
Year	2024 - Current	Fit Kits	Z039.10754
Notes	Where not supplied use original fittings	dB Killer	SCEXDBK24 (TYPE W)



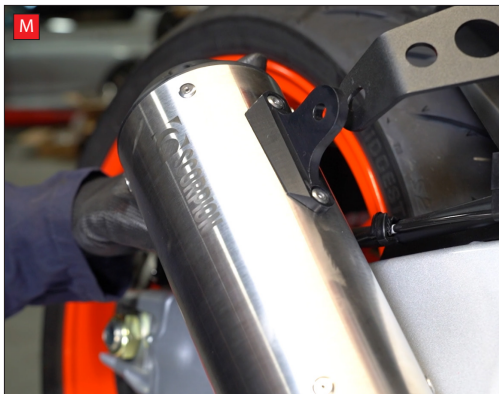
I) Using the diagram on the 1st page, install the new mounting bracket with the supplied hardware. Leave the bolts loose to allow adjustment, you will fully tighten them in a later step.

J) Starting from the left loosely fit the scorpion header pipes. Do not fully tighten until the whole system is fitted.



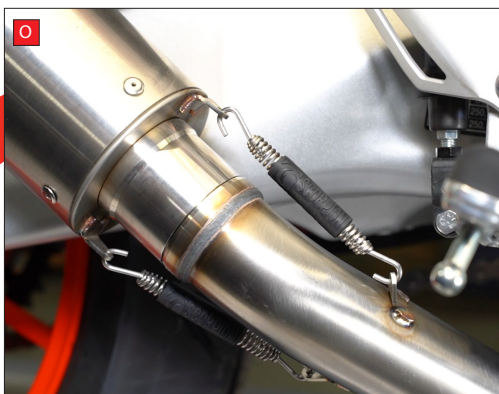
K) Insert the header pipes into the collector.

L) Fit the connecting pipe to the collector. Use the original bolt to secure the pipe to the bike. Do not fully tighten, you will do this later.



M) Slide the silencer on to the connecting pipe.

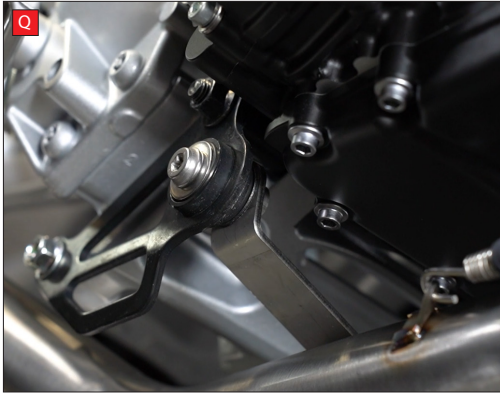
N) Align the silencer and the mounting bracket, then secure in place using the supplied hardware. Leave slightly loose for now, you will fully tighten later.



O) Install all of the supplied springs between the spring hoops.

P) Fully tighten the header nuts.

Bike	Yamaha XSR 900 GP	Part No.	RYA-132-SYS
Year	2024 - Current	Fit Kits	Z039.10754
Notes	Where not supplied use original fittings	dB Killer	SCEXDBK24 (TYPE W)



Q) Fully tighten the connecting pipe mounting bolt.

R) Fully tighten the silencer to mounting bracket bolt.

S) Fully tighten the bolts securing the mounting bracket to the frame.

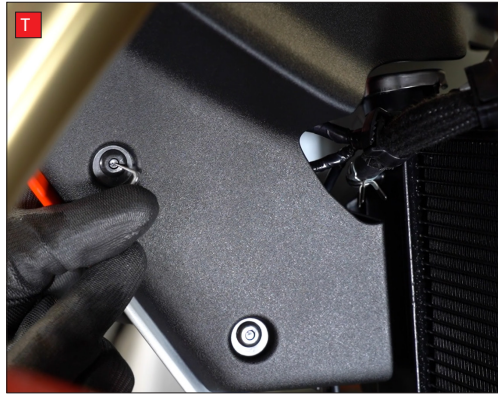
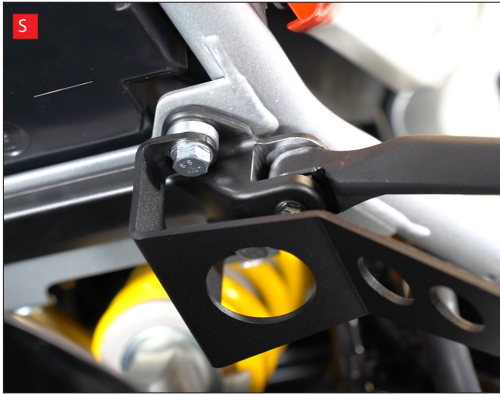
T) Remove the plastic clips from the radiator surround by pushing in the centre of the clips.

U) Remove the upper panel from the right side of the bike.

V) Followed by the upper panel from the left side of the bike.

W) On the right side of the bike, remove the bolt from the back of the front fairing.

X) Carefully pull the fairing away from the bike (you don't need to remove it) to access the plug for the Lambda sensor and disconnect it.



Bike	Yamaha XSR 900 GP	Part No.	RYA-132-SYS
Year	2024 - Current	Fit Kits	Z039.10754
Notes	Where not supplied use original fittings	dB Killer	SCEXDBK24 (TYPE W)



Y) Note the route the wiring runs, then remove the sensor from the bike. The cable tie around the coolant hose is reusable, do not discard it as you will need it later.

Z) Install one of the supplied extension cables, taking the same route as the original. Secure to the coolant hose with the original cable tie.

AA) Feed the female end of the cable between the engine and the swing arm.

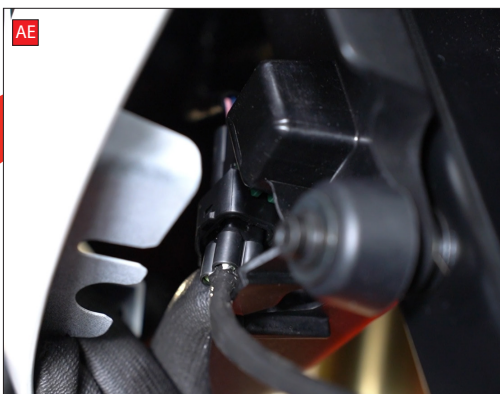
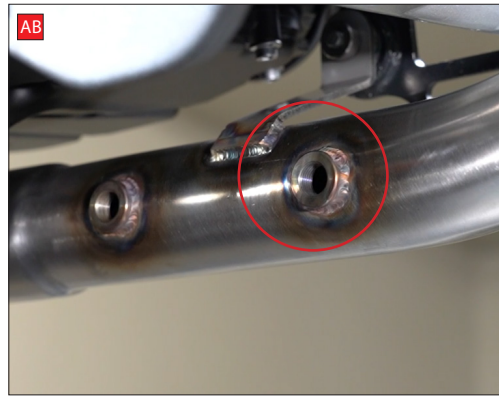
AB) Screw the Lambda sensor into the Lambda Catalyst, then screw the Lambda Catalyst into the rear boss on the Scorpion connecting pipe. Use the supplied copper washer and fully tighten the assembly.

AC) Connect the sensor to the extension cable. Secure any excess cable with the supplied cable tie.

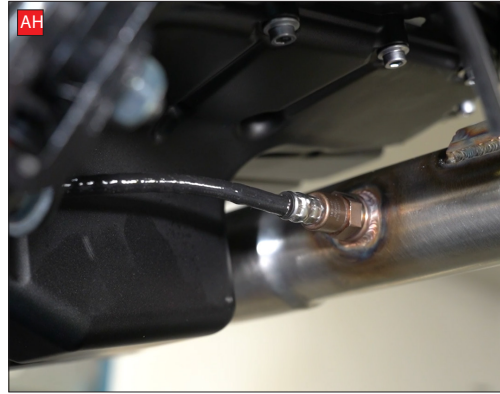
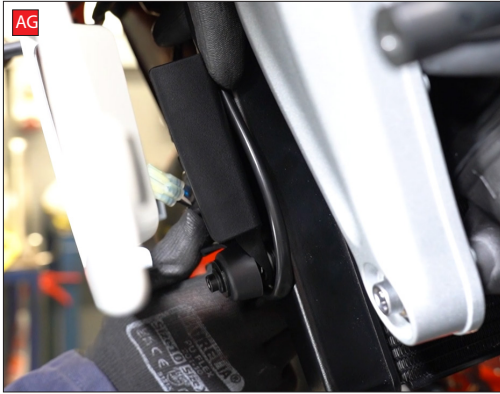
AD) On the left side of the bike, remove the bolt from the back of the front fairing.

AE) Carefully pull the fairing away from the bike (you don't need to remove it) to access the plug for the Lambda sensor and disconnect it.

AF) Cut the cable ties that hold the cable to the coolant hose. Be careful not to cut into the hose or the cable. Remove the sensor from the bike.



Bike	Yamaha XSR 900 GP	Part No.	RYA-132-SYS
Year	2024 - Current	Fit Kits	Z039.10754
Notes	Where not supplied use original fittings	dB Killer	SCEXDBK24 (TYPE W)



AG) Route the extension cable behind the engine mount, to the top of the radiator, then down the side of the radiator to connect back up with the plug on the bike.

AH) Screw the sensor into the front boss on the Scorpion connecting pipe and fully tighten.

AI) Route the cable where the breather pipes are on the left side of the engine and connect to the extension cable.

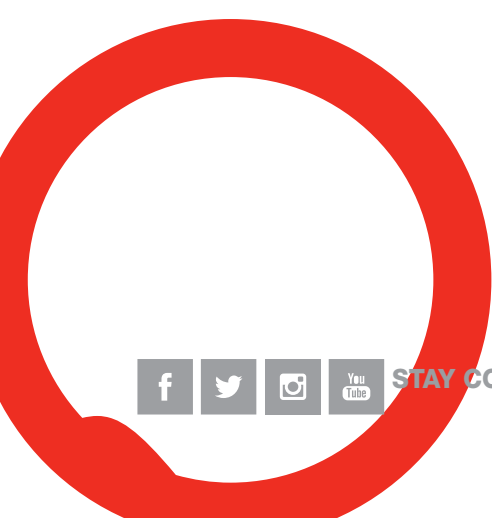


AJ) Secure the fairing back in place on both sides of the bike.

AK) Refit the plastic panels to both sides of the bike.

AL) Refit the push clips to the radiator surround.

When fitted take bike for a short ride to ensure all functions are correct. When bike & exhaust are cool enough check all nuts and bolts are still secure.



STAY CONNECTED TO RED POWER.

Bike	Yamaha XSR 900 GP	Part No.	RYA-132-SYS
Year	2024 - Current	Fit Kits	Z039.10754
Notes	Where not supplied use original fittings	dB Killer	SCEXDBK24 (TYPE W)



Thank you for purchasing your Scorpion Silencer.

Care of your exhaust: Please refrain from cleaning silencer with heavy solvents or abrasives!

Vielen Dank Für den kauf eines Scorpion Schalldampfers! Pflegehinweis: Bitte verwenden Sie niemals Scheuermittel oder aggressive Reiniger zur Pflege Ihres Auspuffes!

Merci d'avoir choisi un échappement Scorpion.

Entretien de votre silencieux: Ne pas utiliser de solvants ou de produits abrasifs!

Muchas gracias por adquirir un Silencioso Scorpion. Le recomendamos no limpiar el silencioso con productos abrasivos o aquellos que contengan disolventes.



STAY CONNECTED TO RED POWER.