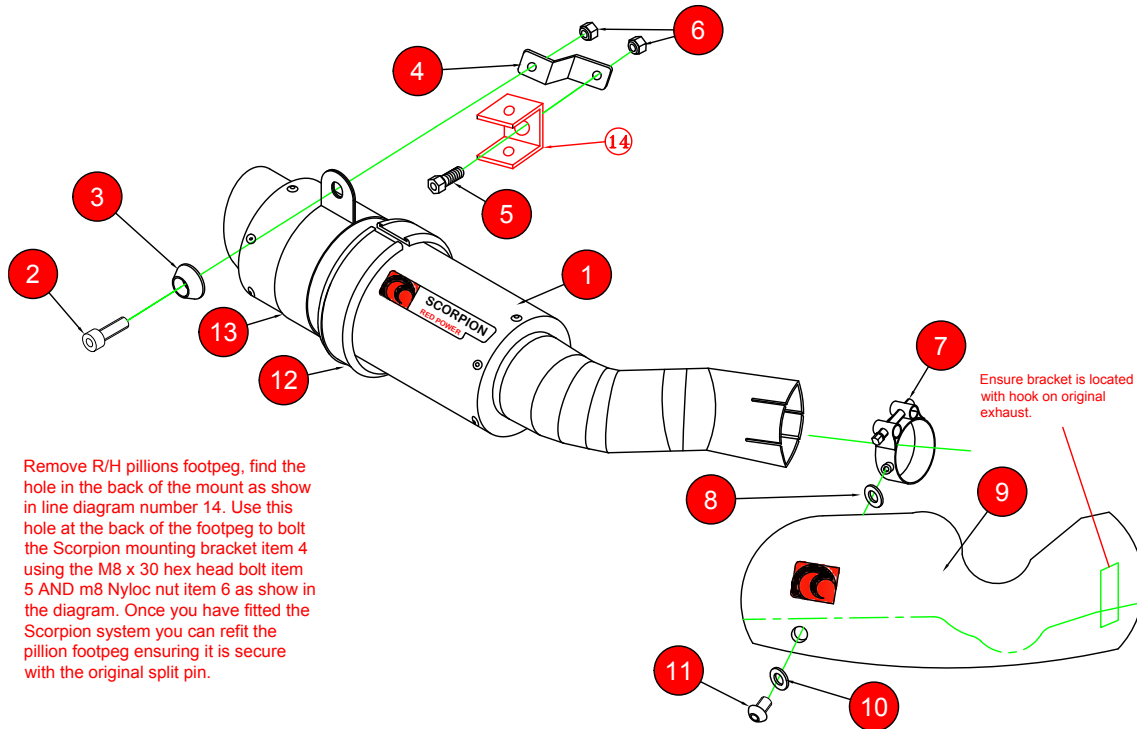


Box: PLOCK 1

BIKE	BMW S1000 RR / BMW S1000 R	PART NO.	BM-1000
YEAR	2009-2014 / 2014-2016	FIT KITS	Z039.10588
NOTES	Use standard fittings where not supplied <b>Remove standard gasket if fitted.</b>	FEATURES	No dB Killer required. This product is EC approved without a dB killer being fitted.



Remove R/H pillion footpeg, find the hole in the back of the mount as show in line diagram number 14. Use this hole at the back of the footpeg to bolt the Scorpion mounting bracket item 4 using the M8 x 30 hex head bolt item 5 AND m8 Nyloc nut item 6 as show in the diagram. Once you have fitted the Scorpion system you can refit the pillion footpeg ensuring it is secure with the original split pin.

- 1 225mm RP-1 GP Silencer SC160 with intergrated CP587
- 2 M8x25 Cap Head Bolt (Z017.10073)
- 3 Alloy Bolt Finisher (Z026.20068)
- 4 Mounting Bracket (Z015.30938)
- 5 M8x30 Hex Head Bolt (Z017.10049)
- 6 2 off M8 Nyloc Nuts (Z017.10062)
- 7 Band Clamp WITH boss (Z028.20122)

- 8 M6 Fibre Washer (Z017.12748)
- 9 Carbon Panel (Z028.20123)
- 10 M6x12 Washer (Z017.10617)
- 11 M6x8mm Botton Head (Z017.10001)
- 12 Square Edge Rubber (Z029.10024)
- 13 Titanium Silencer Strap (Z028.10013)
- 14 R/H Original Pillion Footrest

E-MARK	SC-26 e4 2168
ISSUE NO.	09
DATE	18/02/2019
AUTHORISED	J.Harkin
CHECKED	

NOTE: ENSURE SCORPION SYSTEM IS CLEAR OF MOVING PARTS AND ALL ORIGINAL FUNCTIONS WORK CORRECTLY.



A) Remove original exhaust from bike, taking care to keep all original components in a safe place.

B) Refit Scorpion exhaust as per line diagram above.

C) When fitted take bike for a short ride to ensure all functions are correct.

D) When bike & exhaust are cool enough check all nuts and bolts are still secure.