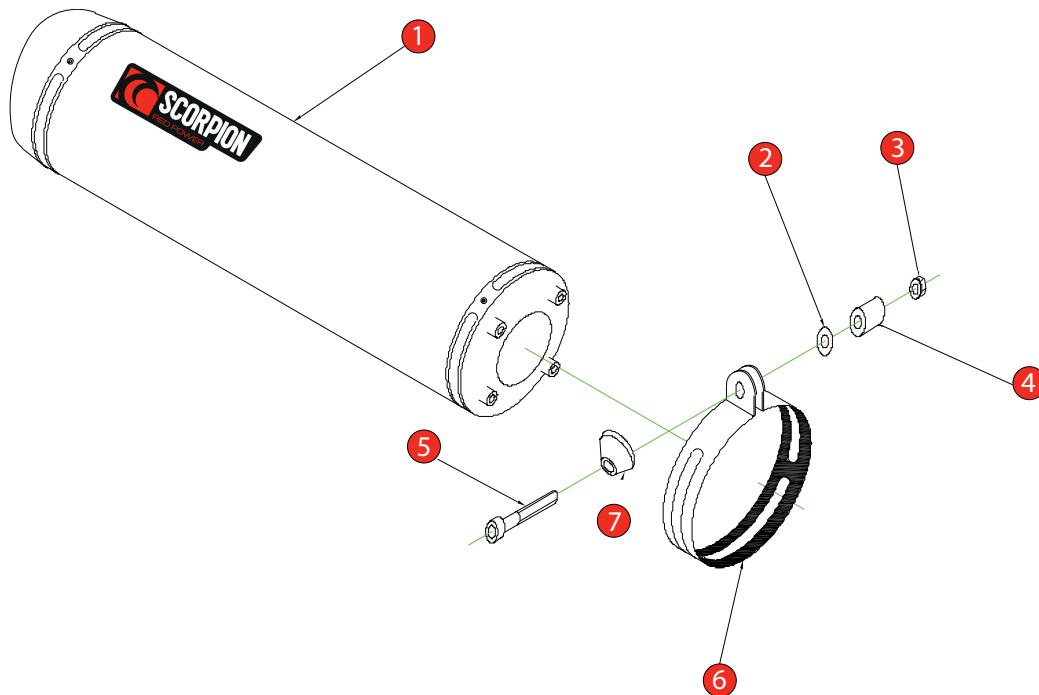


Box: PLOCK 1

BIKE	SUZUKI GSXR 750 Y-K	PART NO.	ESI - 69
YEAR	1999 - 2005	FIT KITS	OVAL Z039.11090 // ROUND Z039.10090
NOTES	Ensure billet is fitted with M8 x 16 Cap Heads & Spring Washers Prior To Despatch	DB-Killer	SCEXDBK12 - (Type B)



- 1 450mm Silencer (R-ZE40.17H)(O-ZE40.18H)
- 2 M8 x 25mm Washer (Z017.10831)
- 3 M8 Nyloc Nut (Z017.10062)
- 4 15mm Spacer (Z026.10005)
- 5 M8 x 50mm Cap Head Bolt (Z017.10078)
- 6 Composite Strap (R-Z038.10089)(O-Z038.10088)
- 7 Alloy Bolt Finisher (Z026.20068)

E-MARK ROUND	BSAU 193a 1990/t3
E-MARK OVAL	BSAU 193a 1990/t3
ISSUE NO.	09
DATE	04/08/21
AUTHORISED	M.Ydlibi
CHECKED	

**NOTE:** ENSURE SCORPION SYSTEM IS CLEAR OF MOVING PARTS AND ALL ORIGINAL FUNCTIONS WORK CORRECTLY.



A) Remove original exhaust from bike, taking care to keep all original components in a safe place.

B) Refit Scorpion exhaust as per line diagram above.

C) When fitted take bike for a short ride to ensure all functions are correct.

D) When bike & exhaust are cool enough check all nuts and bolts are still secure.