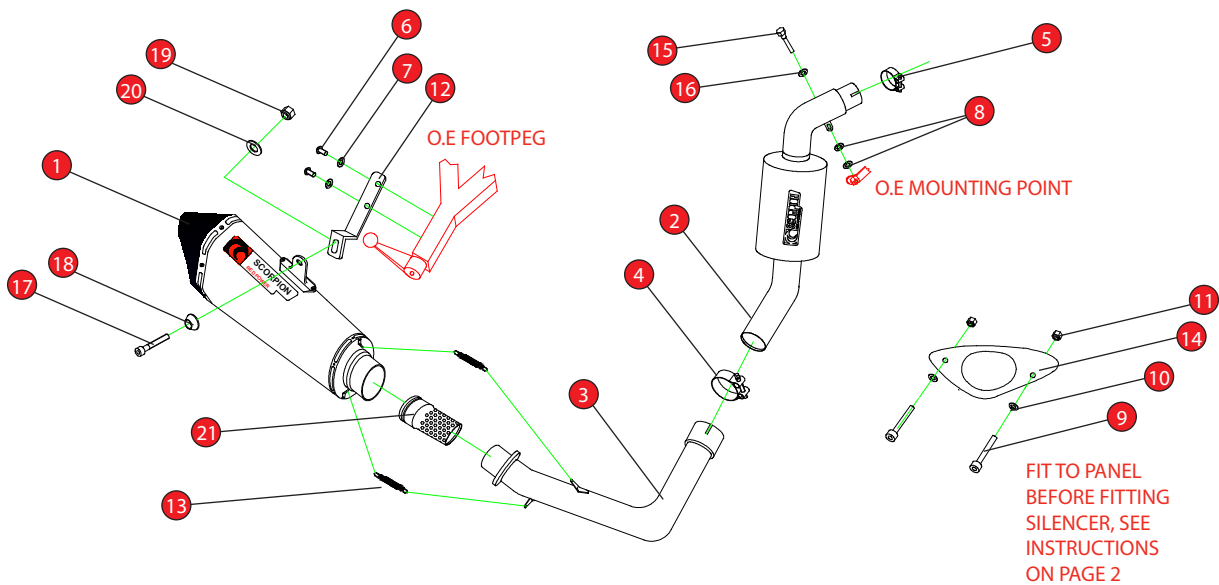


BIKE	KTM RC 390	PART NO.	RKT-80
YEAR	2014-16	FIT KITS	Z039.10573
NOTES	Where not supplied use original fittings	DB-Killer	SCEXDBK23 - (Type V)



- | | |
|---|--|
| 1 Serket Taper RSC231 | 12 Mounting Bracket (Z015.31278) |
| 2 Connecting Pipe 893 | 13 Rubber Coated Spring x 2 (Z028.10030) |
| 3 Connecting Pipe 896 | 14 Fairing Blanking Plate (Z007.31416) |
| 4 51-55mm Clamp (Z016.10002) | 15 M6 x 20mm Hex Head Bolt (Z017.10611) |
| 5 43-47mm Clamp (Z016.10008) | 16 M6 x 17mm Washer (Z017.12722) |
| 6 M8 x 12mm Button Head bolt x 2 (Z017.10125) | 17 M8 x 25mm Cap Head Bolt (Z017.10073) |
| 7 M8 x 17mm Washer x 2 (Z017.10831) | 18 Alloy Bolt Finisher (Z026.20068) |
| 8 Fibre Washer x 2 (Z017.12748) | 19 M8 Nyloc Nut (Z017.10062) |
| 9 M5 x 40mm Button head bolt x 2 (Z017.12742) | 20 M8 x 25 Washer (Z017.10825) |
| 10 M5 Washer (Z017.12743) | 21 Closed End Flute (Z028.20188) |
| 11 M5 Nut (Z017.12777) | |

E-MARK	BSAU 193a 1990/t3
ISSUE NO.	02
DATE	18/10/2018
AUTHORISED	J.Harkin
CHECKED	

NOTE: ENSURE SCORPION SYSTEM IS CLEAR OF MOVING PARTS AND ALL ORIGINAL FUNCTIONS WORK CORRECTLY.



Box: PLOCK 2

BIKE	KTM RC 390	PART NO.	RKT-80
YEAR	2014 - ON	FIT KITS	Z039.10573
NOTES	Where not supplied use original fittings	FEATURES	



A) Remove the original system retaining all of the original fittings..

B) Fit item 2 using items 5,8,15 and 16 following the line diagram above . (As shown in figure B)

C) Fit Item 3 using item 4 following the line diagram above.

D) Fit Item 14 to the panel on the bike using items 9, 10 and 11 (As shown in figure D)

E) Bolt the mounting bracket (item 12) to the rear of the footpeg, using items 6 and 7 following the line diagram above (As shown in figure E)

F) Loosely fit the rest of the system following the line diagram above.

G) Once happy with the position of your exhaust tighten all fittings.



Box: PLOCK 2

BIKE	KTM RC 390	PART NO.	RKT-80
YEAR	2014 - ON	FIT KITS	Z039.10573
NOTES	Where not supplied use original fittings	FEATURES	

Thank you for purchasing your Scorpion Silencer.

Care of your exhaust: Please refrain from cleaning silencer with heavy solvents or abrasives!

Vielen Dank Für den kauf eines Scorpion Schalldampfers! Pflegehinweis: Bitte verwenden Sie niemals Scheuermittel oder aggressive Reiniger zur Pflege Ihres Auspuffes!

Merci d'avoir choisi un echappement Scorpion.

Entretien de votre silencieux: Ne pas utiliser de solvants ou de produits abrasifs!

"Muchas gracias por adquirir un Silencioso Scorpion. Le recomendamos no limpiar el silencioso con productos abrasivos o aquellos que contengan disolventes."