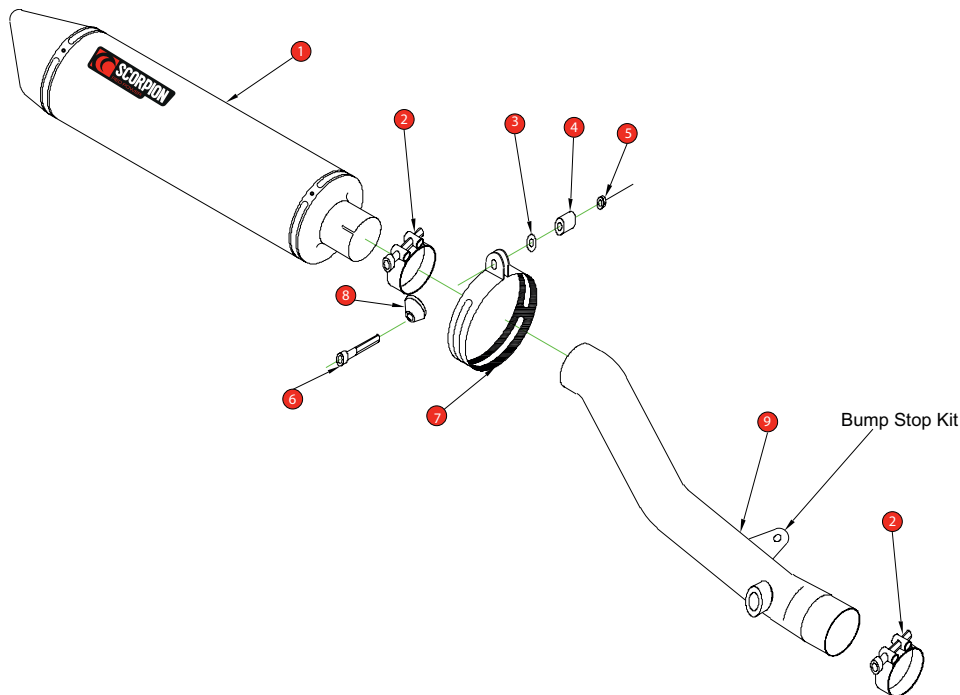


Box: PLOCK 1

BIKE	HONDA CBR 600 Fi F4i	PART NO.	EHA - 73
YEAR	2001 - 2008	FIT KITS	OVAL Z039.11030// ROUND Z039.10030
NOTES	Use standard fittings where not supplied <b>Remove standard gasket if fitted.</b>	DB-Killer	SCEXDBK12 - (Type B)



- |   |  |
|---|--|
| 1 450mm Silencer ESC 50                         | 8 Aluminium Bolt Finisher (Z026.20068) |
| 2 2 x 51 - 55mm Band Clamp (Z016.10002)         | 9 Connecting Pipe CP 267               |
| 3 M8 x 25mm Washer (Z017.10825)                 | 10 Bump Stop Kit (Z017.10010)          |
| 4 10mm Aluminium Spacer (Z026.10004)            |  |
| 5 M8 Nyloc Nut (Z017.10062)                     |  |
| 6 M8 x 60mm Cap Head Bolt (Z017.10080)          |  |
| 7 Composite strap (R-Z038.10090) (O-Z038.10088) |  |

E-MARK ROUND	BSAU 193a 1990/t3
E-MARK OVAL	BSAU 193a 1990/t3
ISSUE NO.	09
DATE	15/10/2018
AUTHORISED	J.Harkin
CHECKED	

**NOTE:** ENSURE SCORPION SYSTEM IS CLEAR OF MOVING PARTS AND ALL ORIGINAL FUNCTIONS WORK CORRECTLY.



A) Remove original exhaust from bike, taking care to keep all original components in a safe place.

B) Refit Scorpion exhaust as per line diagram above.

C) When fitted take bike for a short ride to ensure all functions are correct.

D) When bike & exhaust are cool enough check all nuts and bolts are still secure.