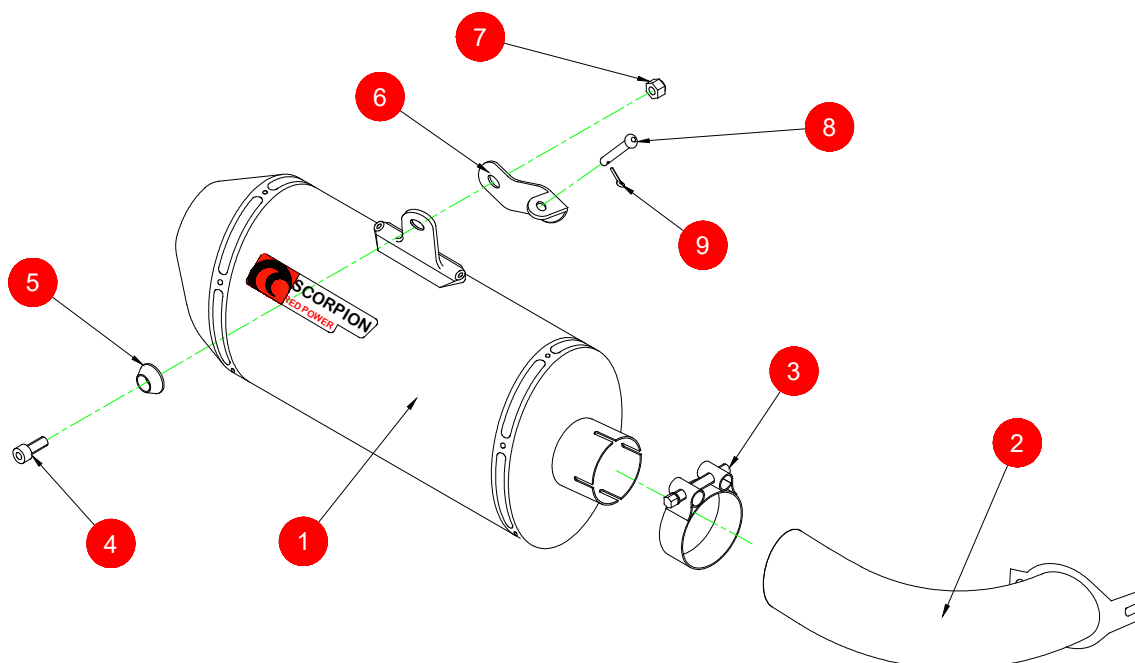


BIKE	Yamaha XJ6	PART NO.	EYA-86
YEAR	2009-16	FIT KITS	OVAL Z039.20456
NOTES	Where not supplied use original fittings	DB-Killer	This product is EC Approved without a DB-Killer.



- | | |
|--------------------------------------|---|
| 1 250mm Silencer ESC 237 | 8 M8x50mm Dome Head With Hole For Spit Pin (Z017.10006) |
| 2 Connecting Pipe CP689 | 9 Ø3x20mm Split Pin (Z017.10008) |
| 3 51-55mm Band Clamp (Z017.10006) | |
| 4 M8x20mm Cap Head Bolt (Z017.10072) | |
| 5 Alloy Bolt Finisher (Z026.20068) | |
| 6 Mounting Bracket (Z015.31019) | |
| 7 M8 Nyoc Nut (Z017.10062) | |

E-MARK ROUND	N/A
E-MARK OVAL	YA-86 [e4] 2371 ©
ISSUE NO.	02
DATE	22/10/2018
AUTHORISED	J.Harkin
CHECKED	

NOTE: ENSURE SCORPION SYSTEM IS CLEAR OF MOVING PARTS AND ALL ORIGINAL FUNCTIONS WORK CORRECTLY.



Box: PLOCK 1

BIKE	Yamaha XJ6	PART NO.	EYA-86
YEAR	2009-16	FIT KITS	OVAL Z039.11359
NOTES	Where not supplied use original fittings	FEATURES	

CONTINUED FROM OVERLEAF:



A) Remove O.E trim by unbolting the 3 trim bolts.

B) Remove O.E split pin and footrest pin.

C) Replace pin with Scorpion supplied dome head bolt.

D) Fit Scorpion mounting bracket as shown in picture.

E) Attach Scorpion link pipe to O.E using O.E bolts x 3.



F) Bolt on Scorpion silencer,

G) Upon completion of the five steps ensure that all nuts and bolts are tight and that all bikes original functions are working correctly. take your bike out for a short test ride to ensure everything is ok, upon return allow your bike to cool and recheck all nuts and bolts.

