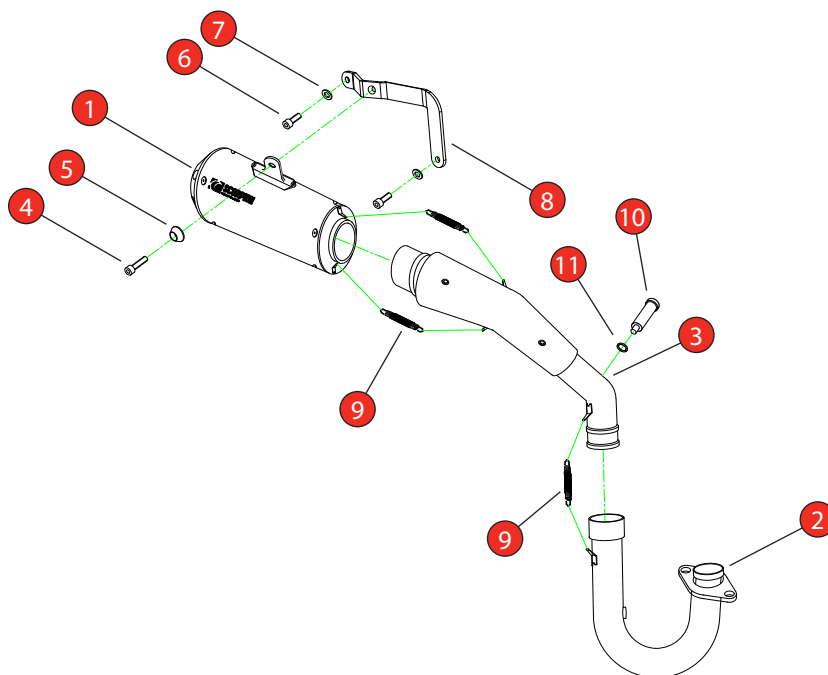


Bike	Honda Monkey (Euro 5+)	Part No.	PHA-205-SYS
Year	2025-Current	Fit Kit	Z039.10763
Notes	Where not supplied use original fittings	dB Killer	SCEXDBK (TYPE PD)

Estimated Fitting Time: 60 Minutes



NO.	PART NO.	DESCRIPTION	QTY
1	PSC445	Red Power Silencer	1
2	CP1226	Header Pipe	1
3	CP1227	Connecting Pipe	1
Fit Kit - Z039.10763			
4	Z017.10073	M8 x 25mm Cap Head Bolt	1
5	Z026.20068	Alloy Bolt Finisher	1
6	Z017.10808	M8 x 16mm Cap Head Bolt	2
7	Z017.10831	M8 x 17mm Washer	2
8	Z015.31424	Mounting Bracket	1
9	Z028.10030	Rubber Coated Spring	3
10	Z026.20185	M12 Lambda Catalyst	1
11	Z017.10728	M12 Copper Washer	1

CLASSIFICATION	Closed Circuit Product
HOMOLOGATED	NO
DATE	09/06/2025
ISSUE	00
AUTHORISED	G O'Shea


<https://youtu.be/Akvsr34oFOI>
**NOTE:** ENSURE SCORPION SYSTEM IS CLEAR OF MOVING PARTS AND ALL ORIGINAL FUNCTIONS WORK CORRECTLY.


STAY CONNECTED TO RED POWER.

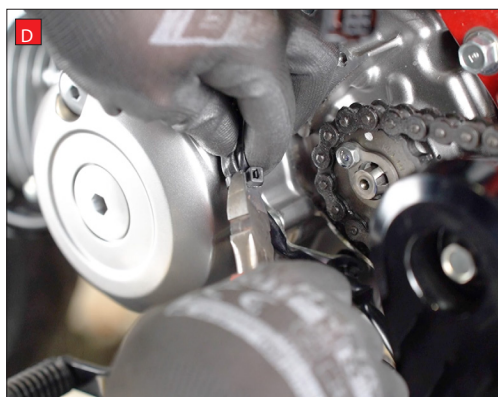
Bike	Honda Monkey (Euro 5+)	Part No.	PHA-205-SYS
Year	2025-Current	Fit Kits	Z039.10763
Notes	Where not supplied use original fittings	dB Killer	SCEXDBK (TYPE PD)



A) On the left side of the bike, remove the wiring cover. You will need the key for this. Once unlocked the cover should just pull off.

B) Staying on the left side of the bike, remove the front sprocket cover.

C) Disconnect the plug for the rear Lambda sensor.

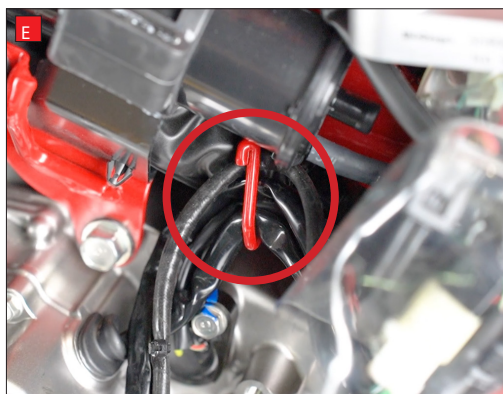


D) Cut the 2 cable ties holding the Lambda sensor wiring, being careful not to cut the wires.

E) Un-hook the sensor wire from the guide.

F) Remove the rear Lambda sensor from the exhaust.

G) Remove the cover from the silencer. You do this by removing the bolt then sliding the cover towards the back of the bike.



H) Remove the upper mounting bolt for the silencer.





Bike	Honda Monkey (Euro 5+)	Part No.	PHA-205-SYS
Year	2025-Current	Fit Kits	Z039.10763
Notes	Where not supplied use original fittings	dB Killer	SCEXDBK (TYPE PD)

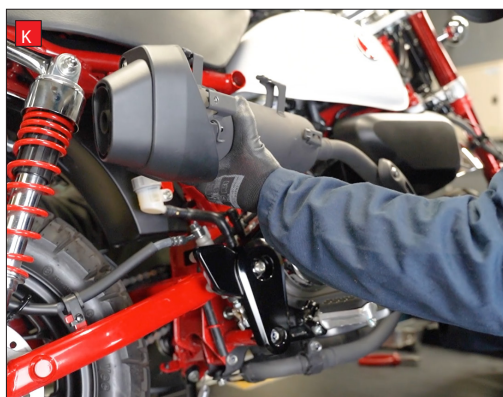


I) Remove the lower mounting bolt for the silencer.

J) Loosen the clamp for the silencer.

K) Carefully remove the silencer from the bike. Feed the drainage pipe out of its holders in the frame as you do.

L) On the right hand side of the bike, unplug the connector for the front Lambda sensor.



M) Remove the wiring for the front lambda sensor from the clips on the engine.

N) Remove the front Lambda sensor from the exhaust.

O) Remove the bolt from the header pipe mounting bracket.

P) Remove the header nuts.





Bike	Honda Monkey (Euro 5+)	Part No.	PHA-205-SYS
Year	2025-Current	Fit Kits	Z039.10763
Notes	Where not supplied use original fittings	dB Killer	SCEXDBK (TYPE PD)

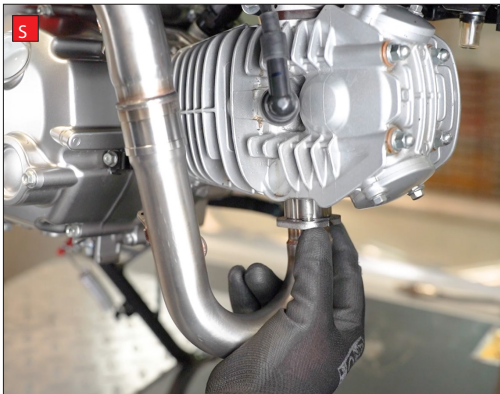


Q) Remove the header pipe from the bike.



R) Slide the 2 Scorpion pipes together, then screw the Lambda Catalyst and the rear Lambda sensor into the 2nd sensor boss on the Scorpion pipe. Fully tighten.

S) Feed the sensor wire through the space above the engine so it exits on the right hand side of the bike. Fit the pipe into the header port and secure in place with the original header nuts. Leave slightly loose for now, you will fully tighten in a later step.



T) Bolt the Scorpion mounting bracket to the original mounting points on the frame using the supplied hardware. Leave slightly loose, you will fully tighten in a later step.



U) Slide the Scorpion silencer onto the connecting pipe and align with the mounting bracket. Secure in place with the supplied mounting bolt. Leave slightly loose, you will fully tighten in a later step.



V) Attach the springs between the spring hoops.

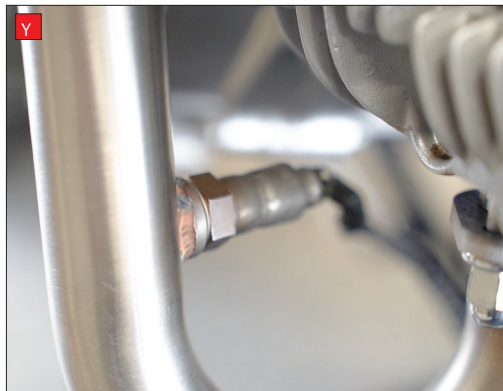
W) Fully tighten the header nuts.

X) Fully tighten the silencer mounting bolt.





Bike	Honda Monkey (Euro 5+)	Part No.	PHA-205-SYS
Year	2025-Current	Fit Kits	Z039.10763
Notes	Where not supplied use original fittings	dB Killer	SCEXDBK (TYPE PD)

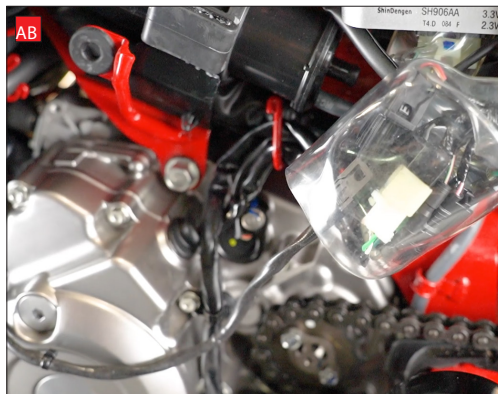


Y) Screw the front Lambda sensor into the boss on the header pipe and fully tighten.

Z) Clip the cable back into the original clips on the engine and route the cable back to the connector.

AA) Reconnect the wiring plug.

AB) On the left side of the bike, reconnect the plug for the rear lambda sensor.

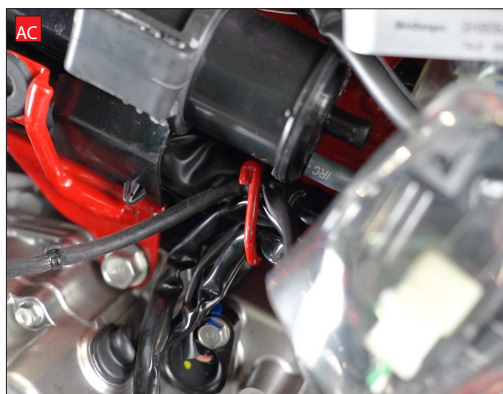


AC) Feed the cable back behind the guide.

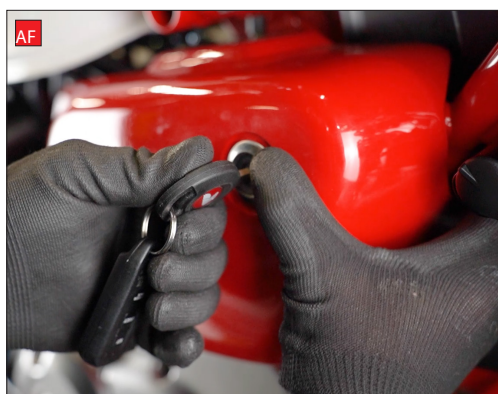
AD) Tuck the cable below the bolt on the frame and run the remainder of the cable over the top of the engine.

AE) Re-fit the sprocket cover.

AF) Re-fit the wiring cover and lock in place.



Take the bike for a short ride to ensure all functions are correct. When the bike & exhaust are cool enough check all nuts and bolts are still secure.



Bike	Honda Monkey (Euro 5+)	Part No.	PHA-205-SYS
Year	2024-Current	Fit Kit	Z039.10763
Notes	Where not supplied use original fittings	dB Killer	SCEXDBK (TYPE PD)

Estimated Fitting Time: 60 Minutes



Thank you for purchasing your Scorpion Silencer.

Care of your exhaust: Please refrain from cleaning silencer with heavy solvents or abrasives!

Vielen Dank Für den kauf eines Scorpion Schalldampfers! Pflegehinweis: Bitte verwenden Sie niemals Scheuermittel oder aggressive Reiniger zur Pflege Ihres Auspuffes!

Merci d'avoir choisi un echappement Scorpion.

Entretien de votre silencieux: Ne pas utiliser de solvants ou de produits abrasifs!

Muchas gracias por adquirir un Silencioso Scorpion. Le recomendamos no limpiar el silencioso con productos abrasivos o aquellos que contengan disolventes.



STAY CONNECTED TO RED POWER.