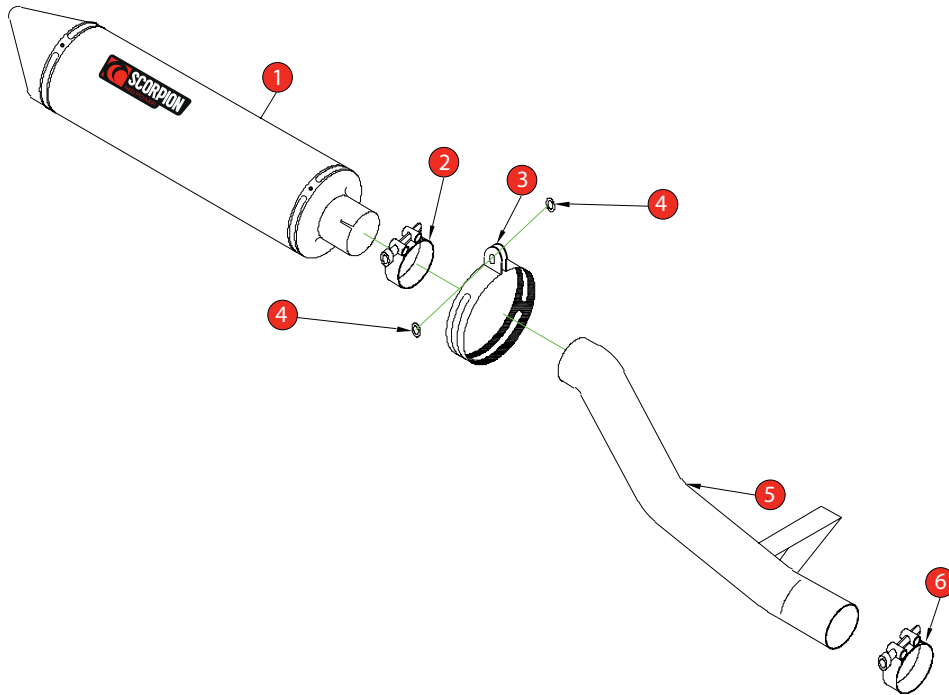


Box: PLOCK 2

BIKE	SUZUKI GSX 1400	PART NO.	ESI - 83
YEAR	2005 - 2008	FIT KITS	OVAL Z039.11110// ROUND Z039.10110
NOTES		FEATURES	DB KILLER Z038.10120



- 1 450mm Silencer ESC 50
- 2 51-55mm Band Clamp (Z016.10002)
- 3 Composite Strap (R-Z038.10089)(O-Z038.10087)
- 4 2 x M8 x 25mm Washers (Z017.10825)
- 5 Connecting Pipe CP 324
- 6 43-47mm Band Clamp (Z016.10008)

E-MARK ROUND	BSAU 193a 1990/t3
E-MARK OVAL	BSAU 193a 1990/t3
ISSUE NO.	5
DATE	12/10/16
AUTHORISED	S.Jackson
CHECKED	

NOTE: ENSURE SCORPION SYSTEM IS CLEAR OF MOVING PARTS AND ALL ORIGINAL FUNCTIONS WORK CORRECTLY.

A) Remove original exhaust from bike, taking care to keep all original components in a safe place.

B) Refit Scorpion exhaust as per line diagram above.

C) When fitted take bike for a short ride to ensure all functions are correct.

D) When bike & exhaust are cool enough check all nuts and bolts are still secure.