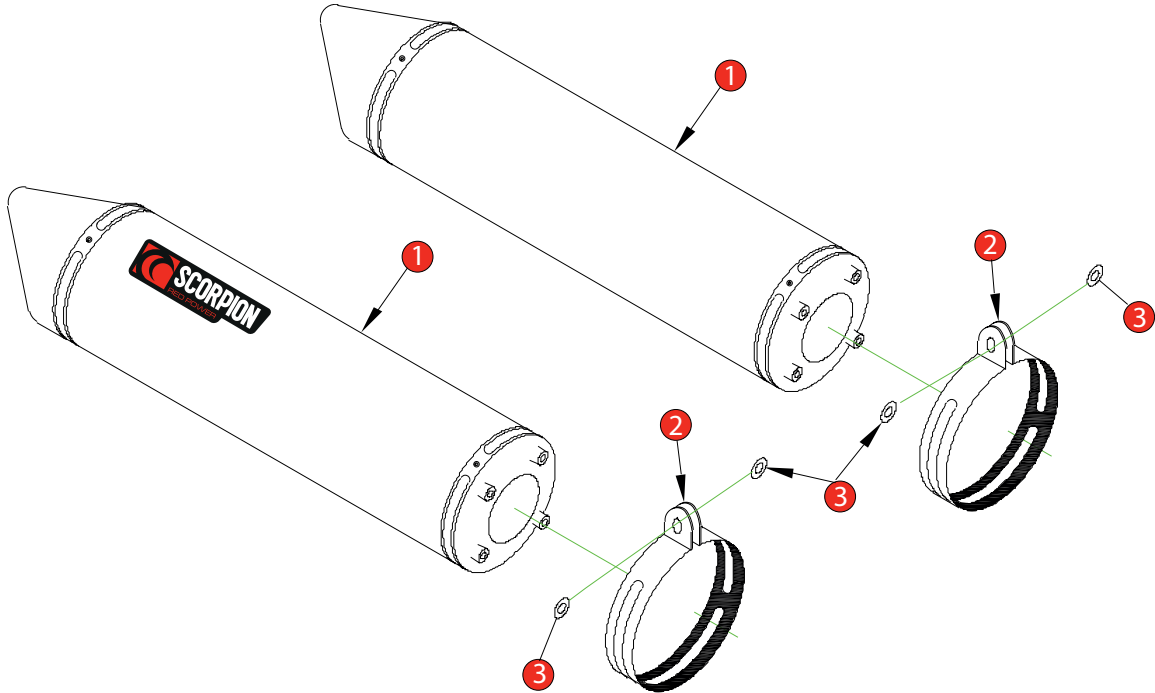


Box: PLOCK 1

BIKE	SUZUKI SV1000	PART NO.	ESI - 76
YEAR	2003-07	FIT KITS	OVAL Z039.11270 // ROUND Z039.10270
NOTES	Ensure billet is fitted with M8 x 16mm Cap Head Bolts and Spring Washers prior to depatch	DB-Killer	2 x SCEXDBK12 - (Type B)



- 1 2 x 450mm Silencers (R-ZE40.17H)(O-ZE40.18H)
- 2 Composite Silencer Straps (R-Z038.10089)(O-Z038.10087)
- 3 4 x M8 x 25mm Washers (Z017.10825)

E-MARK ROUND	BSAU 193a 1990/t3
E-MARK OVAL	BSAU 193a 1990/t3
ISSUE NO.	08
DATE	22/10/2018
AUTHORISED	J.Harkin
CHECKED	

NOTE: ENSURE SCORPION SYSTEM IS CLEAR OF MOVING PARTS AND ALL ORIGINAL FUNCTIONS WORK CORRECTLY.

A) Remove original exhaust from bike, taking care to keep all original components in a safe place.

B) Refit Scorpion exhaust as per line diagram above.

C) When fitted take bike for a short ride to ensure all functions are correct.

D) When bike & exhaust are cool enough check all nuts and bolts are still secure.