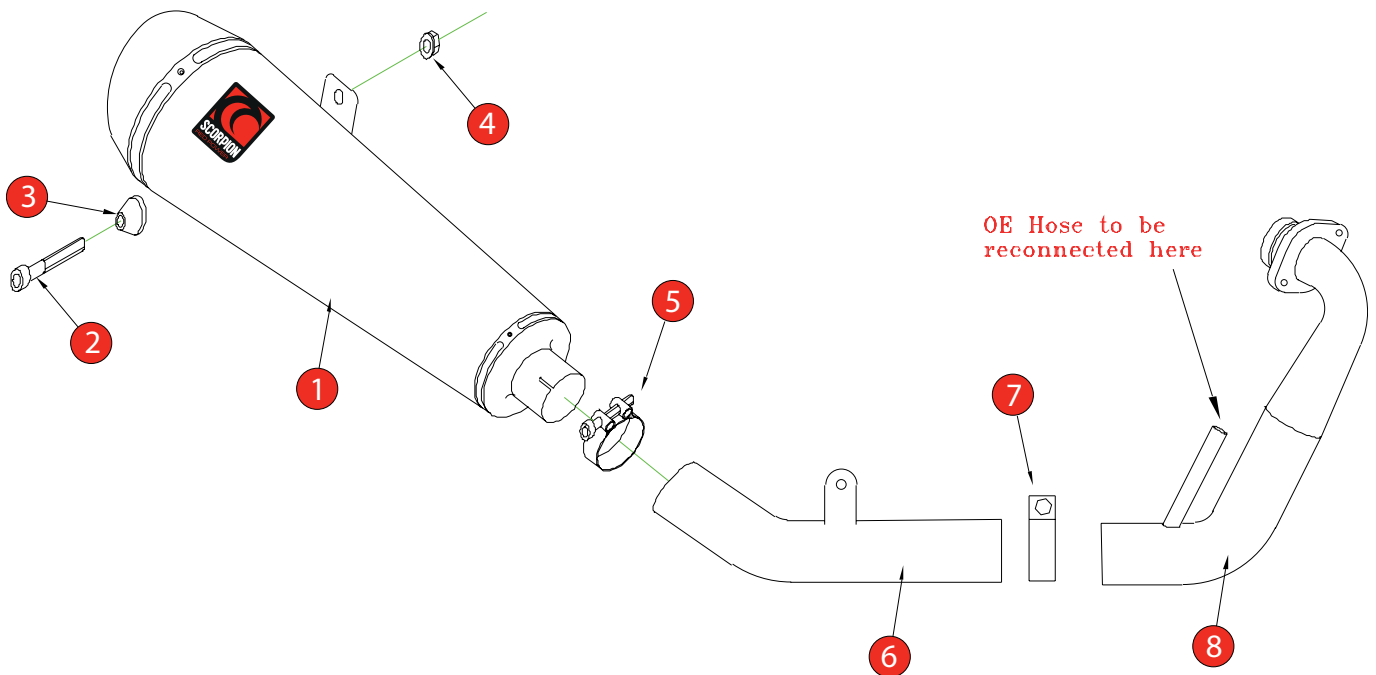


BIKE	YAMAHA YZF - R125	PART NO.	EYA-83
YEAR	2008- 13	FIT KITS	Z039.11257
NOTES	Use standard fittings where not supplied Remove standard gasket if fitted.	DB-Killer	SCEXDBK20 - (Type T)



- 1 275mm Silencer ESC131
- 2 M8x35mm Cap Head Bolt
- 3 Alloy Bolt Finisher (Z026.20068)
- 4 M8 Nyloc Nut (Z017.10062)
- 5 47-51mm Band Clamp (Z016.10003)
- 6 Connecting Pipe CP476
- 7 43-47mm Band Clamp (Z016.10008)

- 8 E-Mark Cat Pipe CP468
- 9 Photo Fitting Instructions

E-MARK CP468	BSAU 193a 1990/t3
E-MARK OVAL	BSAU 193a 1990/t3
ISSUE NO.	09
DATE	05/08/21
AUTHORISED	M.Ydlibi
CHECKED	

NOTE: ENSURE SCORPION SYSTEM IS CLEAR OF MOVING PARTS AND ALL ORIGINAL FUNCTIONS WORK CORRECTLY.



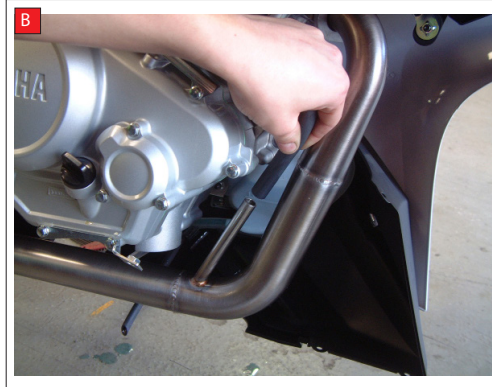
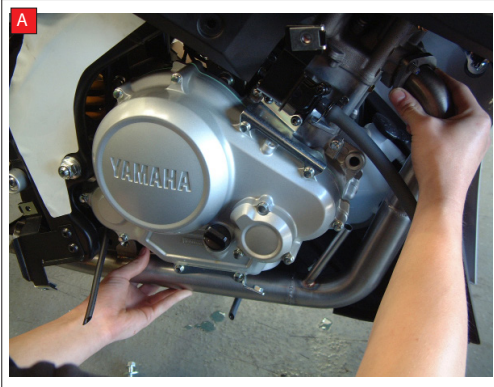
Fitting instructions follow on next page.



Box: PLOCK 3

BIKE	YAMAHA YZF - R125	PART NO.	EYA-83
YEAR	2008- 13	FIT KITS	Z039.11257
NOTES	Where not supplied use original fittings	FEATURES	

CONTINUED FROM OVERLEAF:



A) Remove all 3 R/H side body panels and remove the O.E exhaust taking care not to lose any of the original fittings.
Attach Scorpion front pipe only fastening nuts up finger tight.

B) Slide breather pipe on as shown.

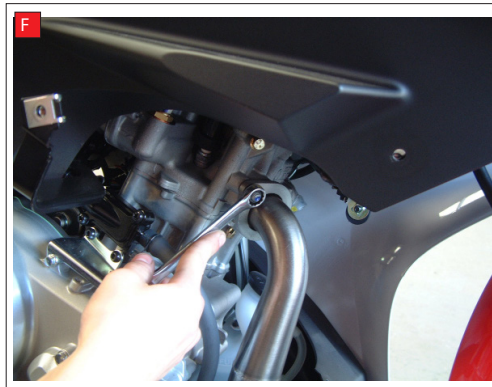
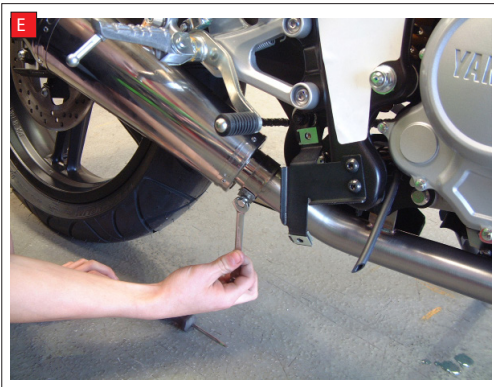
C) Using the O.E bolt, tighten the connecting pipe bracket up, again only finger tight.



D) Fit silencer on to pipework ensuring clamp is on the inlet side of the silencer. Using supplied M8 bolt, nyoc nut and bolt finisher, bolt the silencer bracket securely in place.

E) Ensure all components are fitted correctly and tighten up all loose nuts/bolts starting with the band clamp between the two connecting pipes, then the O.E bolt that fits link pipe in step C, the band clamp to the silencer and finally the 2 bolts at the engine port.

Refit body panels removed in step A.



When the above 6 steps have been completed double check all the nuts and bolts are tight and that all original bike functions are not impaired. When satisfied fitment is correct take your bike for a short run to ensure system is sealed correctly and there are no leaks. After a short run, allow bike to cool and check all nuts and bolts are tight.